

Office of the Clerk/Treasurer

W240N3065 Pewaukee Road
Pewaukee, WI 53072
(262) 691-0770 Fax 691-1798

CANCELLED DUE TO WEATHER CONCERNS
BIKE AND PEDESTRIAN PATH PLANNING COMMITTEE
MEETING NOTICE AND AGENDA

Wednesday, April 18, 2018

4:30 PM

Common Council Chambers ~ Pewaukee City Hall
W240 N0365 Pewaukee Road ~ Pewaukee, Wisconsin

-
1. Call to Order and Pledge of Allegiance
 2. Public Comment - Please limit your comments to 2 minutes, if further time for discussion is needed please contact the City Clerk prior to the meeting.
 3. Discussion and Possible Action to Approve the Bike & Pedestrian Planning Committee Meeting Minutes Dated March 28, 2018
 4. Discussion Regarding the Creation of a Greenway System Within the City of Pewaukee [Blackwood]
 5. Update Related to the Safety Brochure [Ford]
 6. Discussion to Select the Next Meeting Date and List Possible Future Topics
 7. Public Comment - Please limit your comments to 2 minutes, if further time for discussion is needed please contact the City Clerk prior to the meeting.
 8. Adjournment

Kelly Tarczewski
Clerk/Treasurer

April 16, 2018

NOTICE

It is possible that members of other governmental bodies of the municipality may be in attendance to gather information that may form a quorum. At the above stated meeting, no action will be taken by any governmental body other than the governmental body specifically referred to above in this notice.

Any person who has a qualifying disability under the Americans with Disabilities Act that requires the meeting or materials at the meeting to be in an accessible format must contact the Clerk/Treasurer, Kelly Tarczewski, at (262) 691-0770 three business days prior to the meeting so that arrangements may be made to accommodate your request.

CITY OF PEWAUKEE
BIKE AND PEDESTRIAN PATH PLANNING COMMITTEE AGENDA ITEM 3.

DATE: April 18, 2018

DEPARTMENT: Clerk/Treasurer

PROVIDED BY:

SUBJECT:

Discussion and Possible Action to Approve the Bike & Pedestrian Planning Committee Meeting Minutes Dated March 28, 2018

BACKGROUND:

FINANCIAL IMPACT:

RECOMMENDED MOTION:

CITY OF PEWAUKEE
BIKE AND PEDESTRIAN PATH PLANNING COMMITTEE AGENDA ITEM 4.

DATE: April 18, 2018

DEPARTMENT: Clerk/Treasurer

PROVIDED BY:

SUBJECT:

Discussion Regarding the Creation of a Greenway System Within the City of Pewaukee [Blackwood]

BACKGROUND:

FINANCIAL IMPACT:

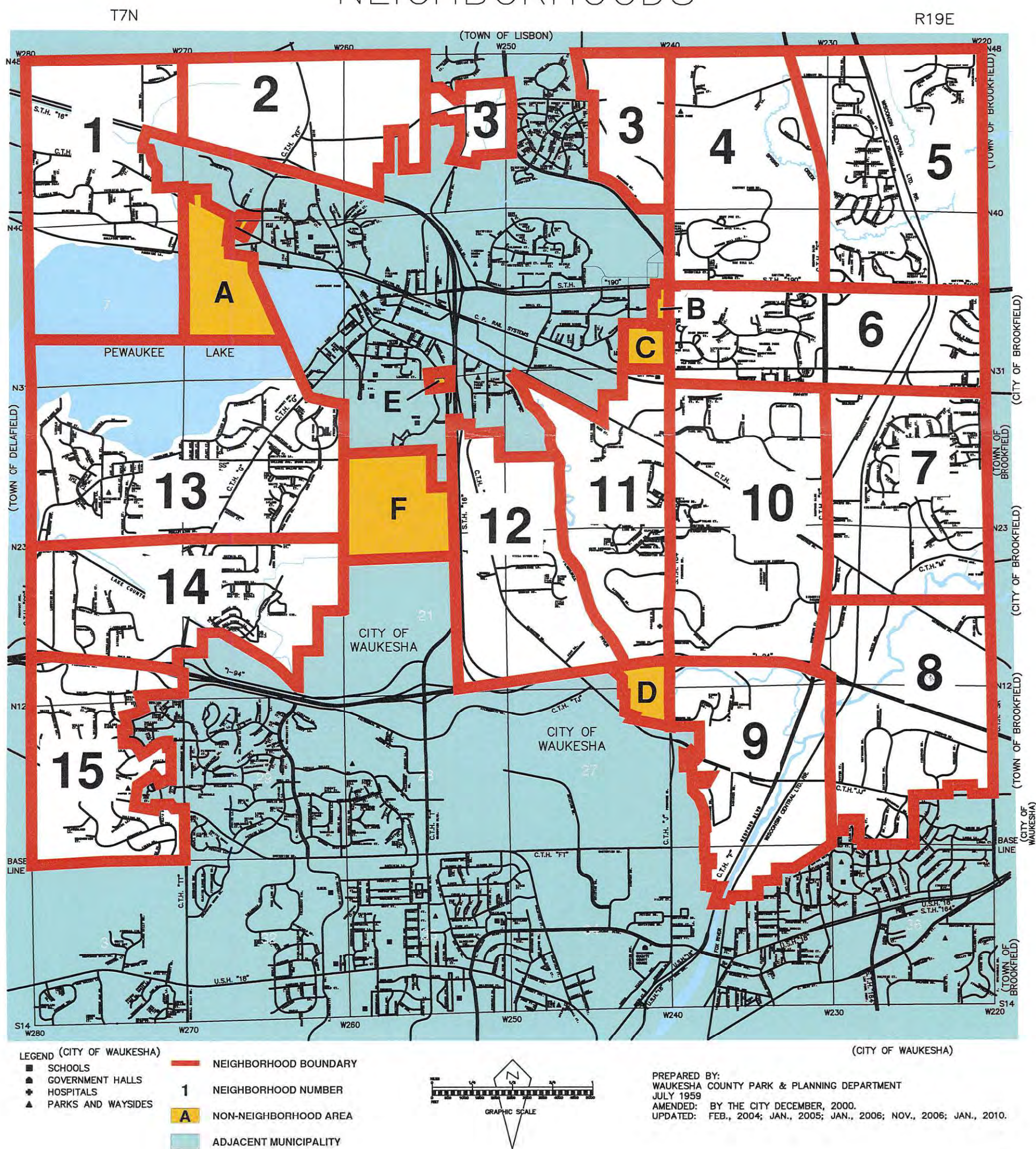
RECOMMENDED MOTION:

ATTACHMENTS:

Description

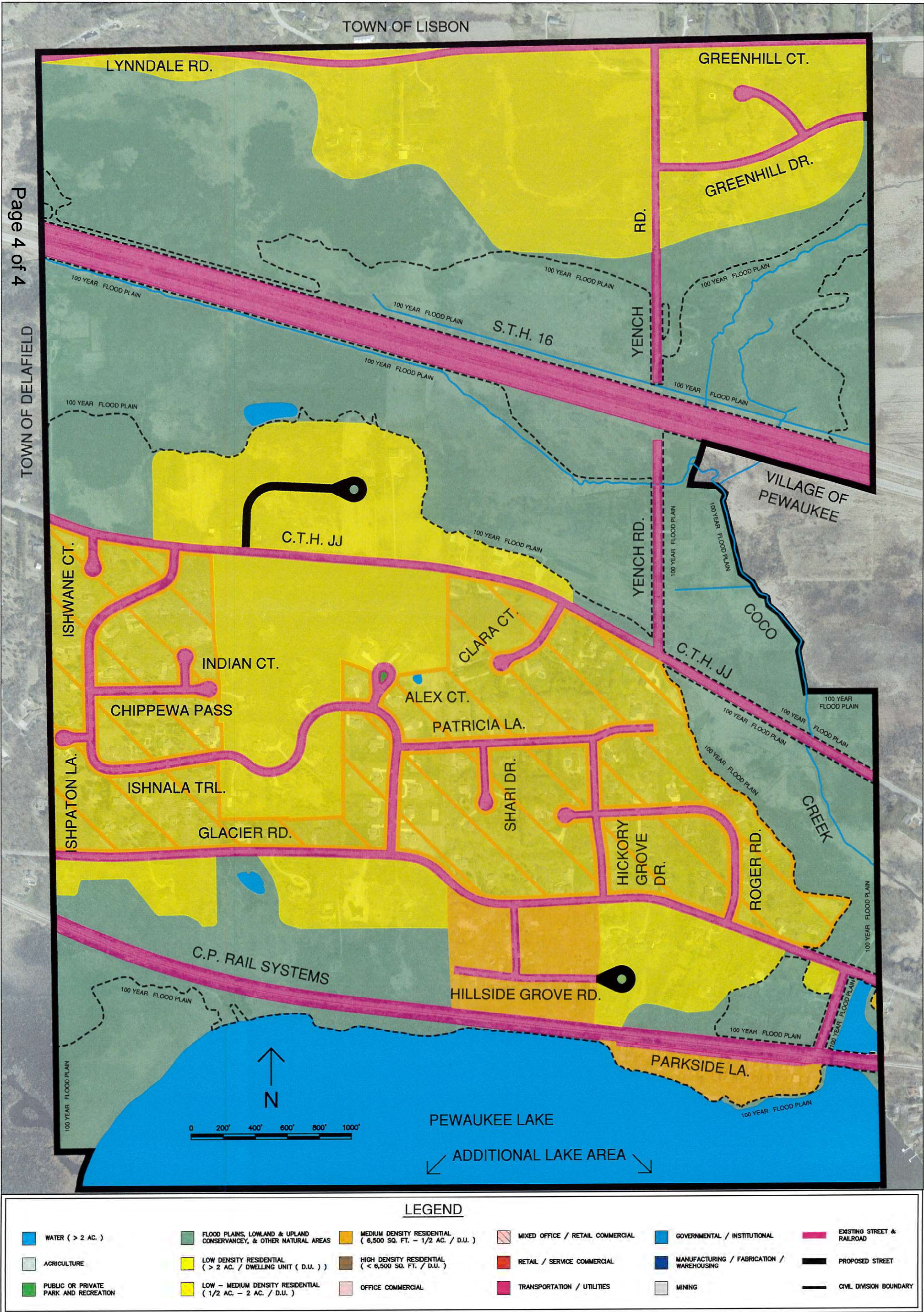
2050 Neighborhood Maps

EXHIBIT A
CITY OF PEWAUKEE
NEIGHBORHOODS



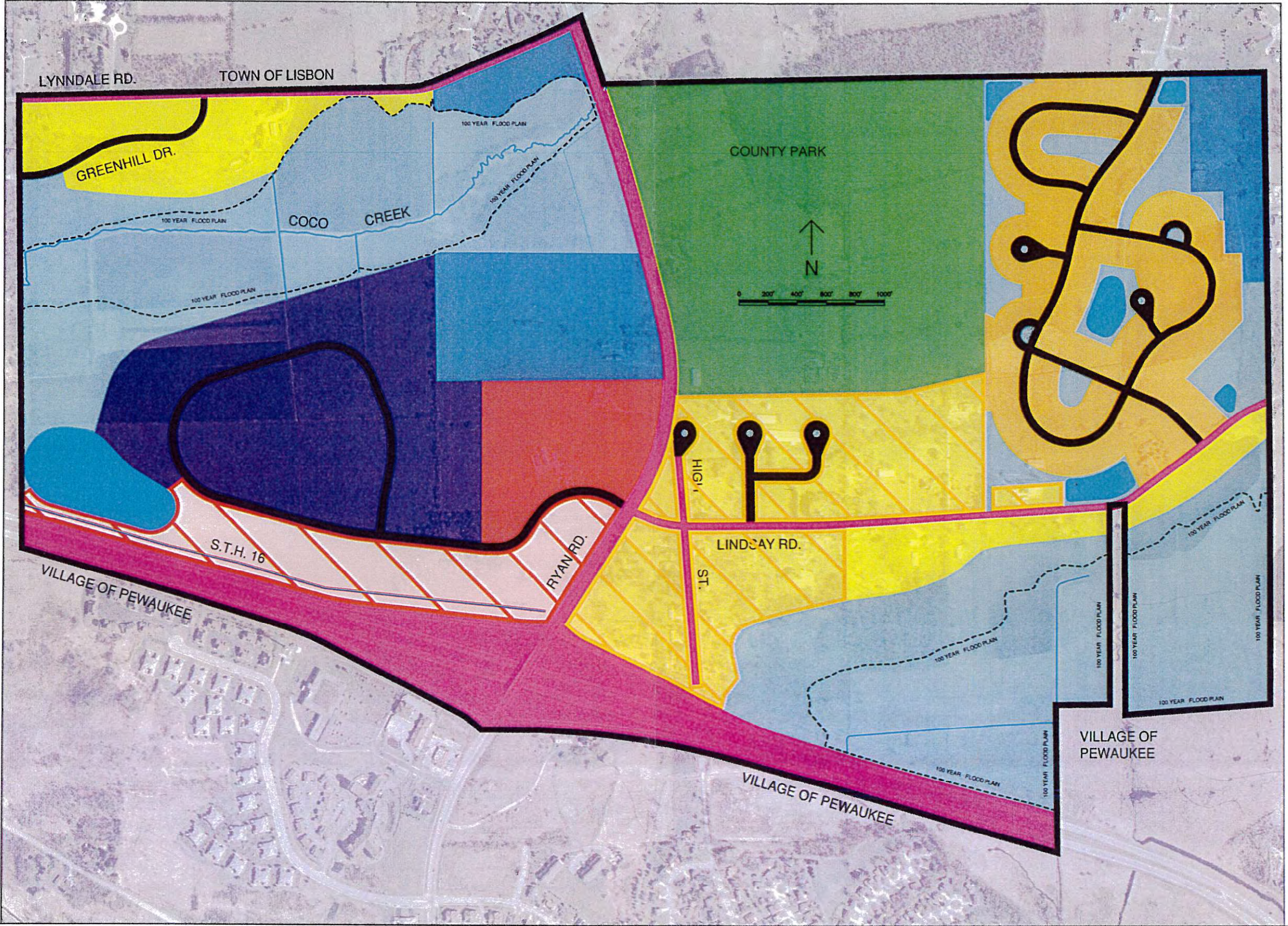
MAP NO.1

HILLSIDE GLACIER NEIGHBORHOOD PLAN - 2050



Page 4 of 4
TOWN OF DELAFIELD

MAP NO.2 RYAN PARK NEIGHBORHOOD PLAN - 2050

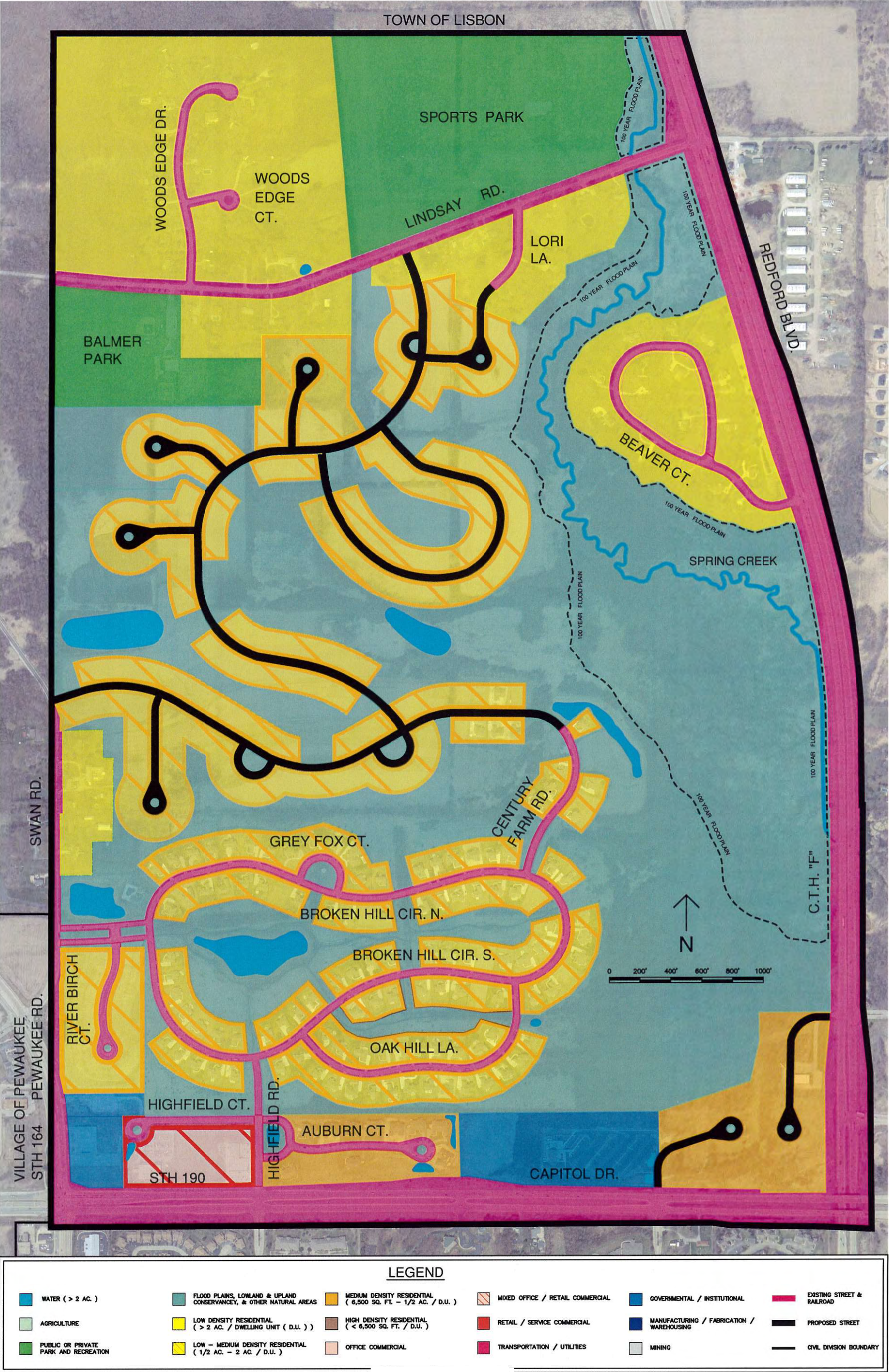


LEGEND					
WATER (> 2 AC.)	FLOOD PLAINS, LOWLAND & UPLAND CONSERVANCY, & OTHER NATURAL AREAS	MEDIUM DENSITY RESIDENTIAL (< 8,500 SQ. FT. - 1/2 AC. / D.U.)	MIXED OFFICE / RETAIL COMMERCIAL	GOVERNMENTAL / INSTITUTIONAL	EXISTING STREET & RAILROAD
AGRICULTURE	LOW DENSITY RESIDENTIAL (> 2 AC. / DWELLING UNIT (D.U.))	HIGH DENSITY RESIDENTIAL (< 8,500 SQ. FT. / D.U.)	RETAIL / SERVICE COMMERCIAL	MANUFACTURING / FABRICATION / WAREHOUSING	PROPOSED STREET
PUBLIC OR PRIVATE PARK AND RECREATION	LOW - MEDIUM DENSITY RESIDENTIAL (1/2 AC. - 2 AC. / D.U.)	OFFICE COMMERCIAL	TRANSPORTATION / UTILITIES	MINING	CIVIL DIVISION BOUNDARY

Packet Page 36

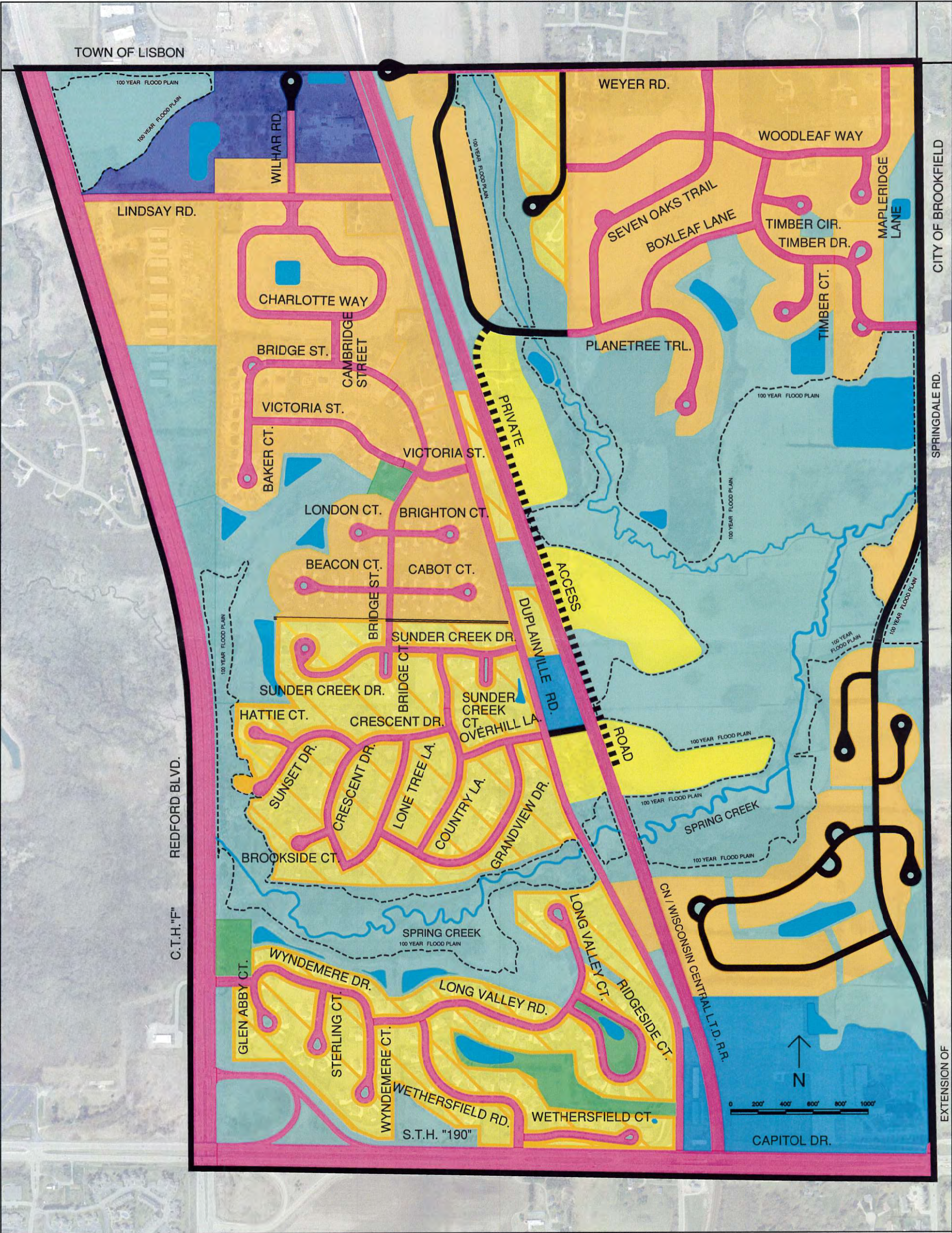
[illegible]

CENTURY FARM NEIGHBORHOOD PLAN - 2050



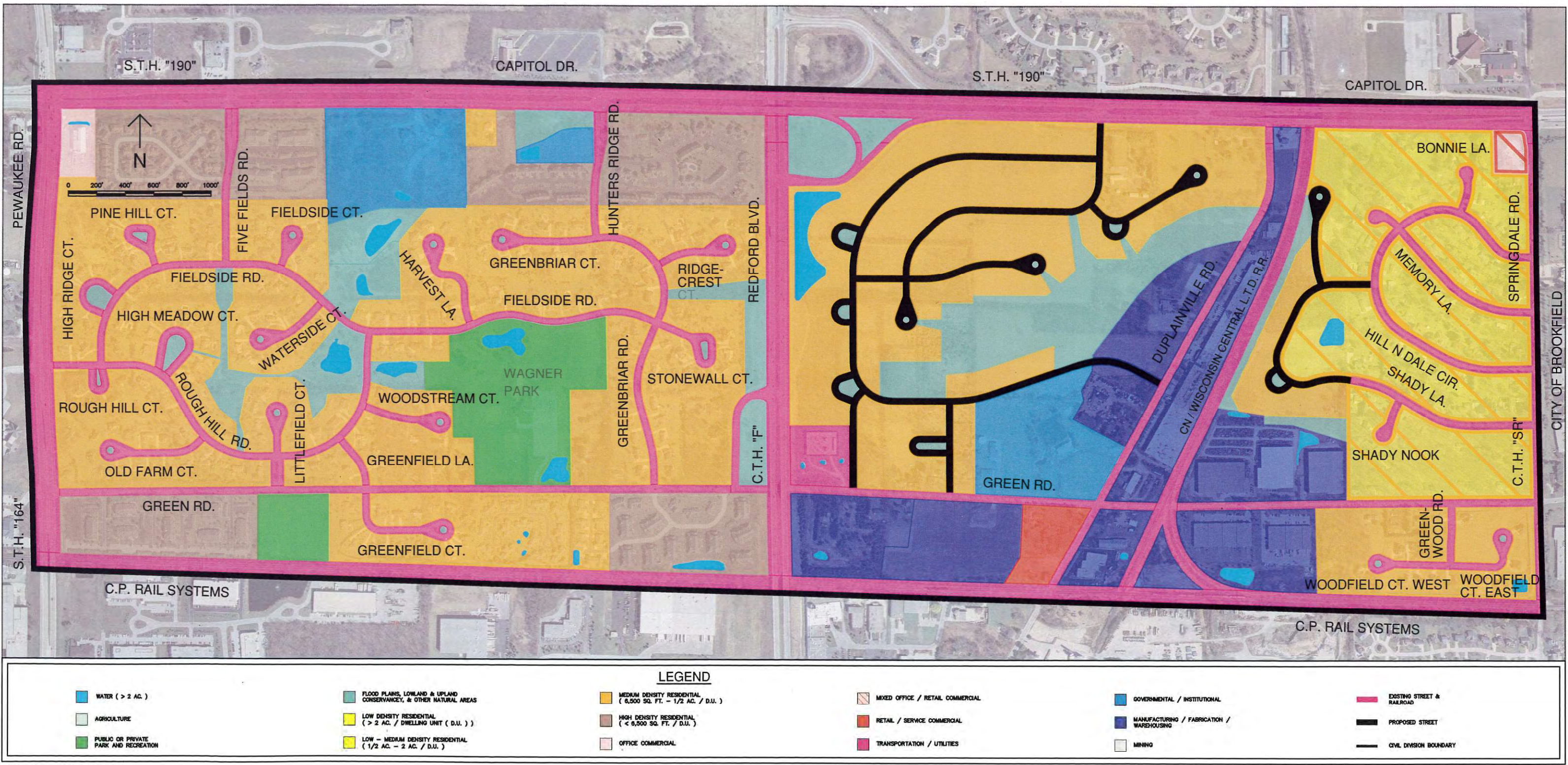
MAP NO.5

SPRING CREEK NEIGHBORHOOD PLAN - 2050



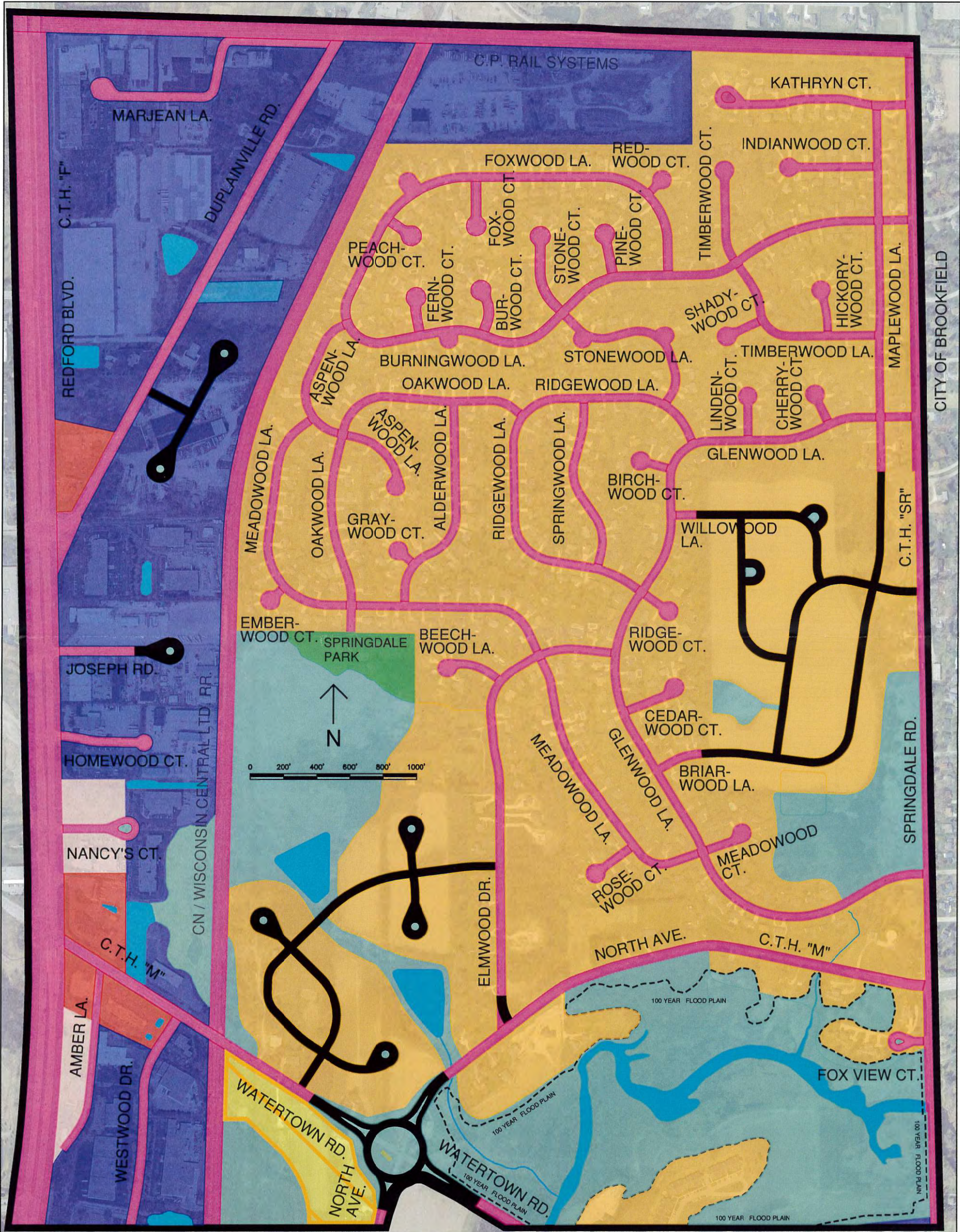
LEGEND					
WATER (> 2 AC.)	FLOOD PLAINS, LOWLAND & UPLAND CONSERVANCY, & OTHER NATURAL AREAS	MEDIUM DENSITY RESIDENTIAL (6,500 SQ. FT. - 1/2 AC. / D.U.)	MIXED OFFICE / RETAIL COMMERCIAL	GOVERNMENTAL / INSTITUTIONAL	EXISTING STREET & RAILROAD
AGRICULTURE	LOW DENSITY RESIDENTIAL (> 2 AC. / DWELLING UNIT (D.U.))	HIGH DENSITY RESIDENTIAL (< 6,500 SQ. FT. / D.U.)	RETAIL / SERVICE COMMERCIAL	MANUFACTURING / FABRICATION / WAREHOUSING	PROPOSED STREET
PUBLIC OR PRIVATE PARK AND RECREATION	LOW - MEDIUM DENSITY RESIDENTIAL (1/2 AC. - 2 AC. / D.U.)	OFFICE COMMERCIAL	TRANSPORTATION / UTILITIES	MINING	CIVIL DIVISION BOUNDARY

MAP NO.6 GREEN ROAD NEIGHBORHOOD PLAN - 2050



DATE ADOPTED: _____

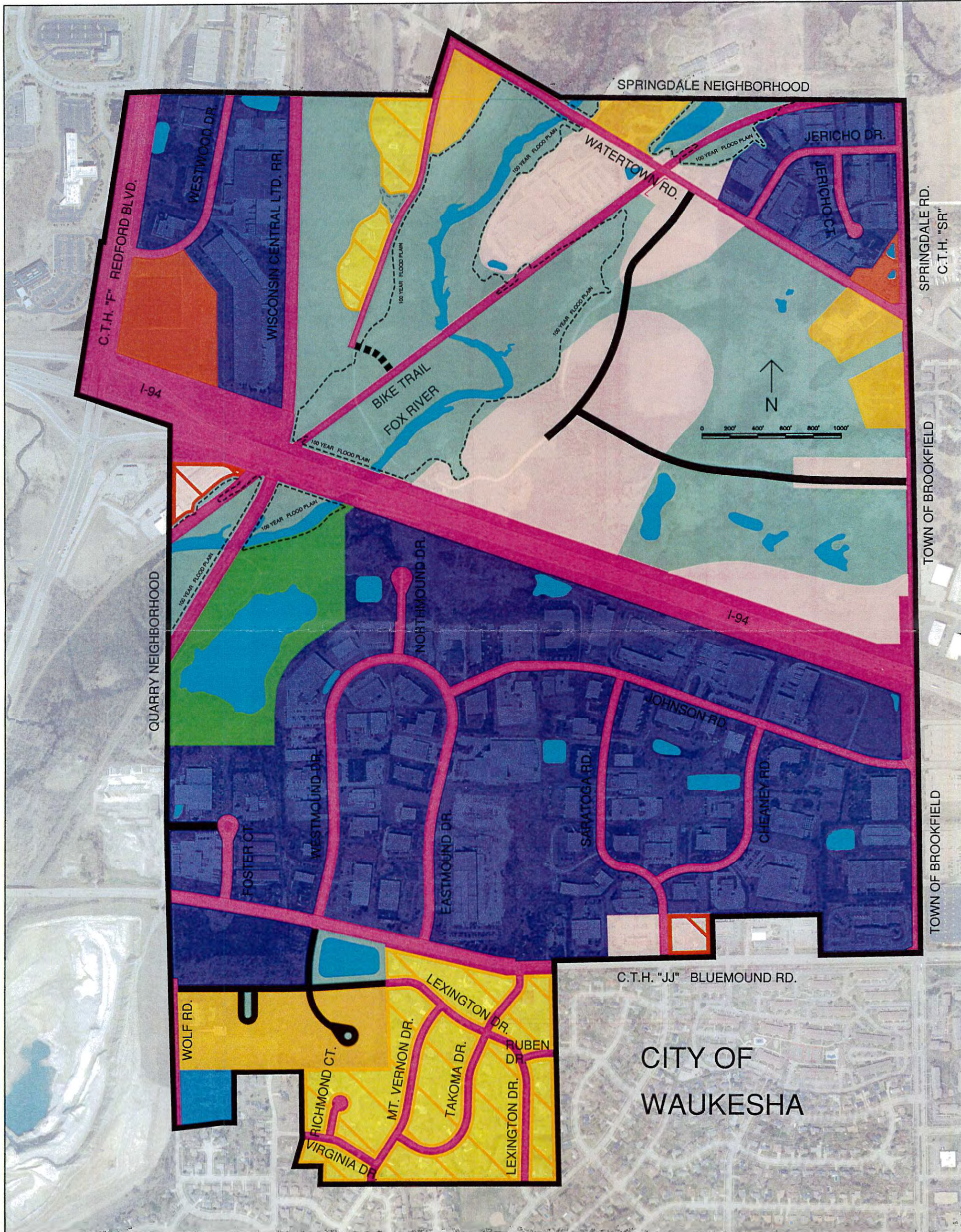
SPRINGDALE NEIGHBORHOOD PLAN - 2050





















LEGEND

WATER (> 2 AC.)	FLOOD PLAINS, LOWLAND & UPLAND CONSERVANCY, & OTHER NATURAL AREAS	MEDIUM DENSITY RESIDENTIAL (6,500 SQ. FT. - 1/2 AC. / D.U.)	MIXED OFFICE / RETAIL COMMERCIAL	GOVERNMENTAL / INSTITUTIONAL	EXISTING STREET & RAILROAD
AGRICULTURE	LOW DENSITY RESIDENTIAL (> 2 AC. / DWELLING UNIT (D.U.))	HIGH DENSITY RESIDENTIAL (< 6,500 SQ. FT. / D.U.)	RETAIL / SERVICE COMMERCIAL	MANUFACTURING / FABRICATION / WAREHOUSING	PROPOSED STREET
PUBLIC OR PRIVATE PARK AND RECREATION	LOW - MEDIUM DENSITY RESIDENTIAL (1/2 AC. - 2 AC. / D.U.)	OFFICE COMMERCIAL	TRANSPORTATION / UTILITIES	MINING	CIVIL DIVISION BOUNDARY

MAP NO.8
OLD QUARRY NEIGHBORHOOD PLAN - 2050

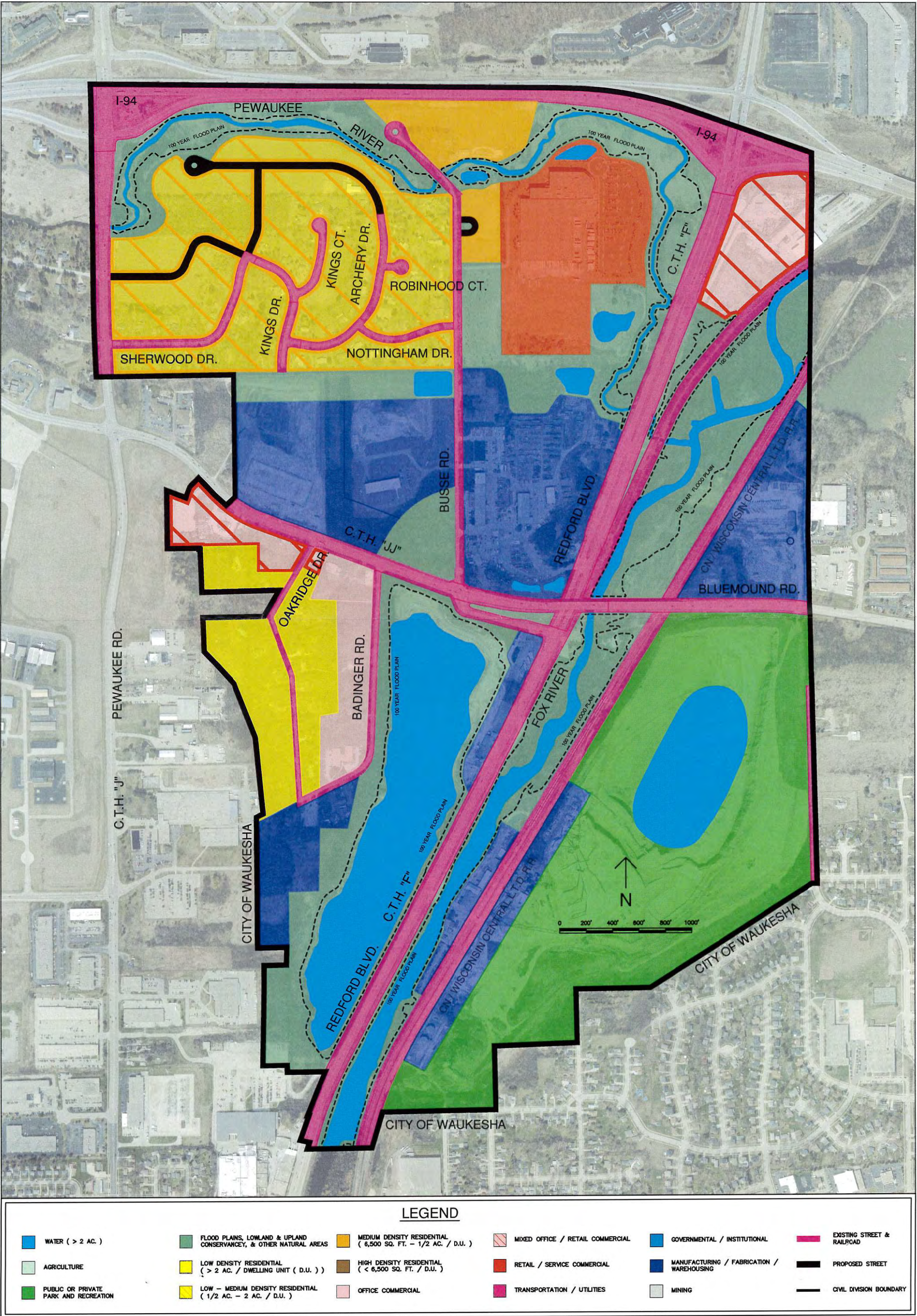


LEGEND

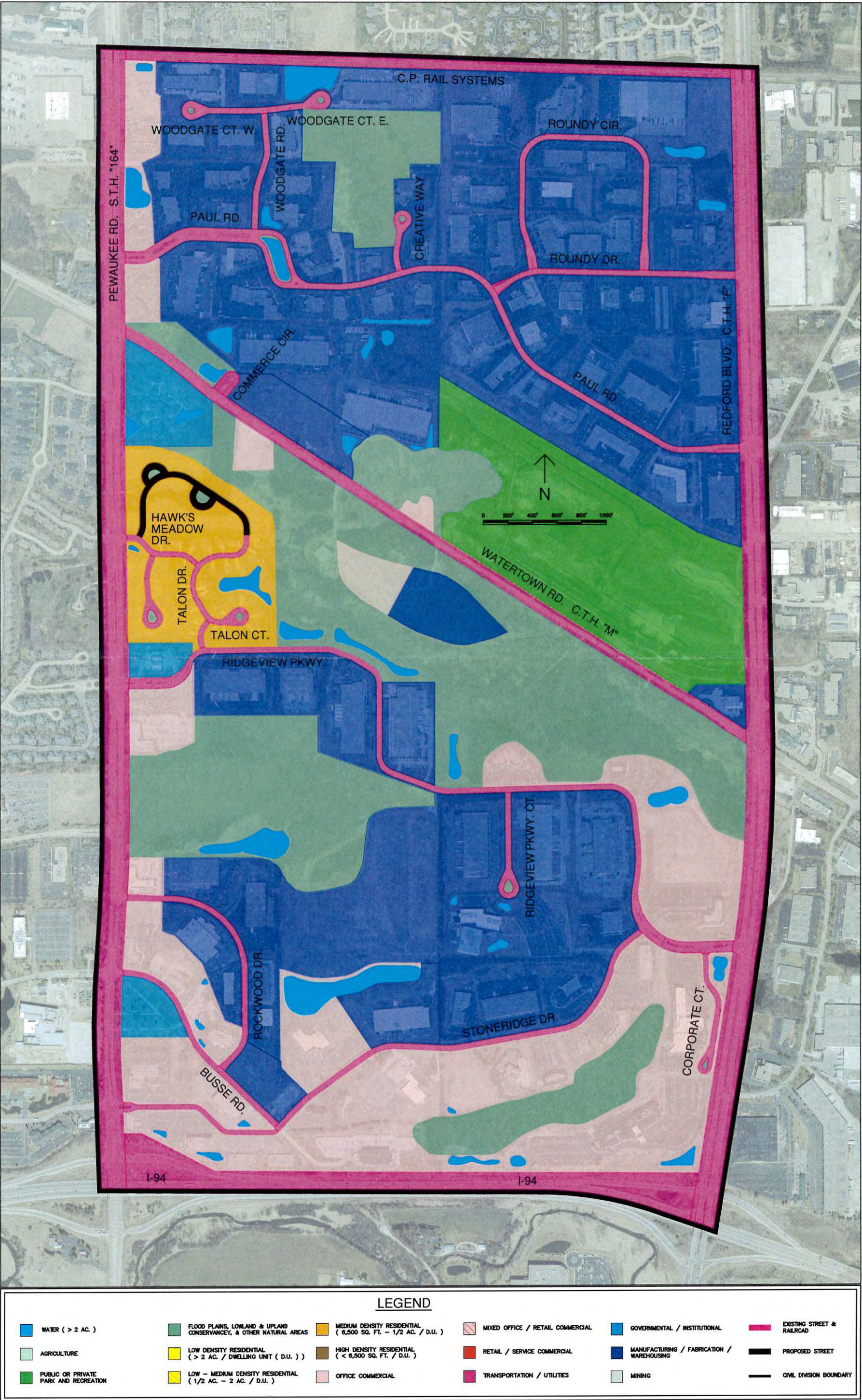
 WATER (> 2 AC.)	 FLOOD PLAINS, LOWLAND & UPLAND CONSERVANCY, & OTHER NATURAL AREAS	 MEDIUM DENSITY RESIDENTIAL (6,500 SQ. FT. - 1/2 AC. / D.U.)	 MIXED OFFICE / RETAIL COMMERCIAL	 GOVERNMENTAL / INSTITUTIONAL	 EXISTING STREET & RAILROAD
 AGRICULTURE	 LOW DENSITY RESIDENTIAL (> 2 AC. / DWELLING UNIT (D.U.))	 HIGH DENSITY RESIDENTIAL (< 6,500 SQ. FT. / D.U.)	 RETAIL / SERVICE COMMERCIAL	 MANUFACTURING / FABRICATION / WAREHOUSING	 PROPOSED STREET
 PUBLIC OR PRIVATE PARK AND RECREATION	 LOW - MEDIUM DENSITY RESIDENTIAL (1/2 AC. - 2 AC. / D.U.)	 OFFICE COMMERCIAL	 TRANSPORTATION / UTILITIES	 MINING	 CIVIL DIVISION BOUNDARY

MAP NO.9

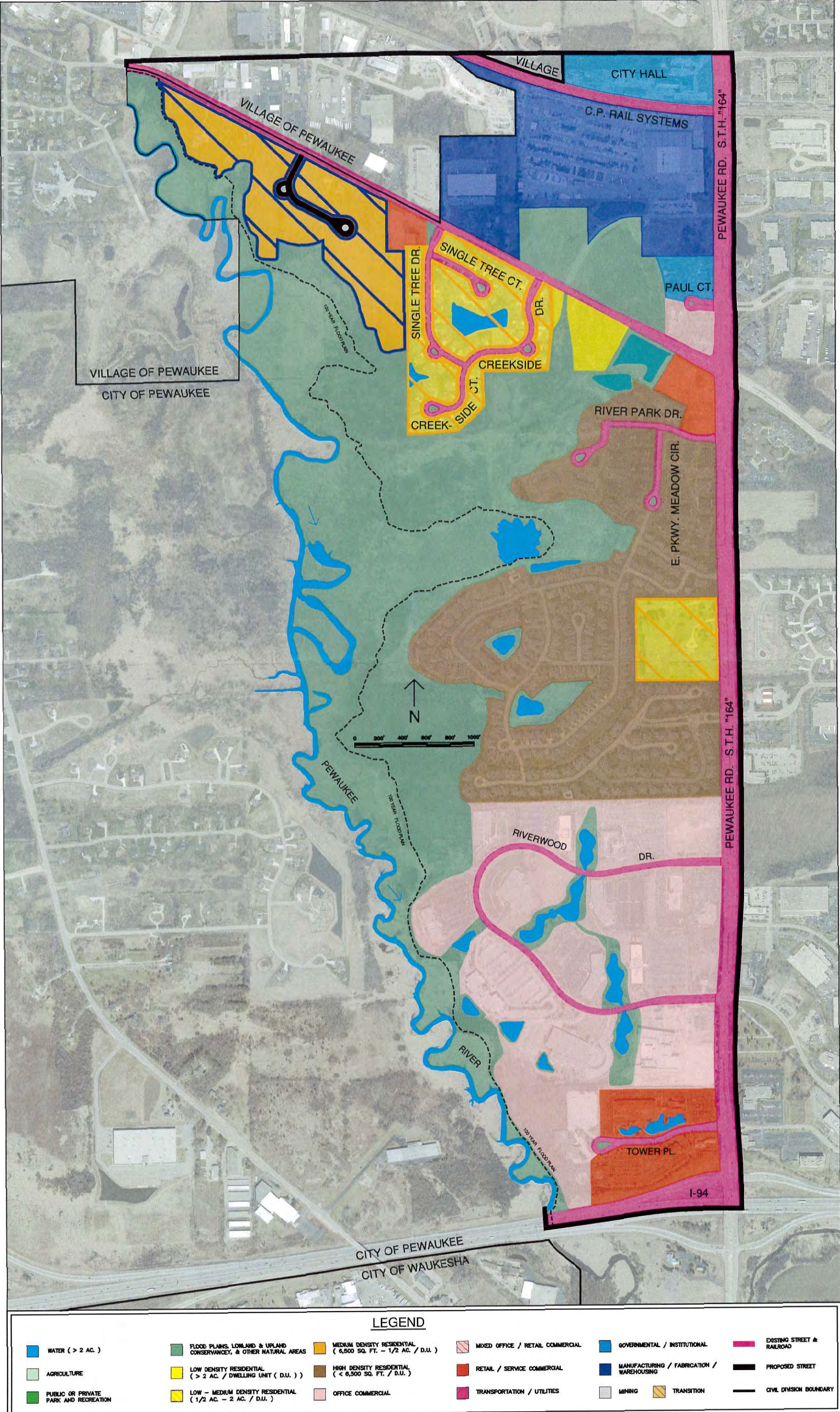
QUARRY NEIGHBORHOOD PLAN - 2050



MAP NO. 10
OFFICE/ INDUSTRIAL NEIGHBORHOOD PLAN - 2050

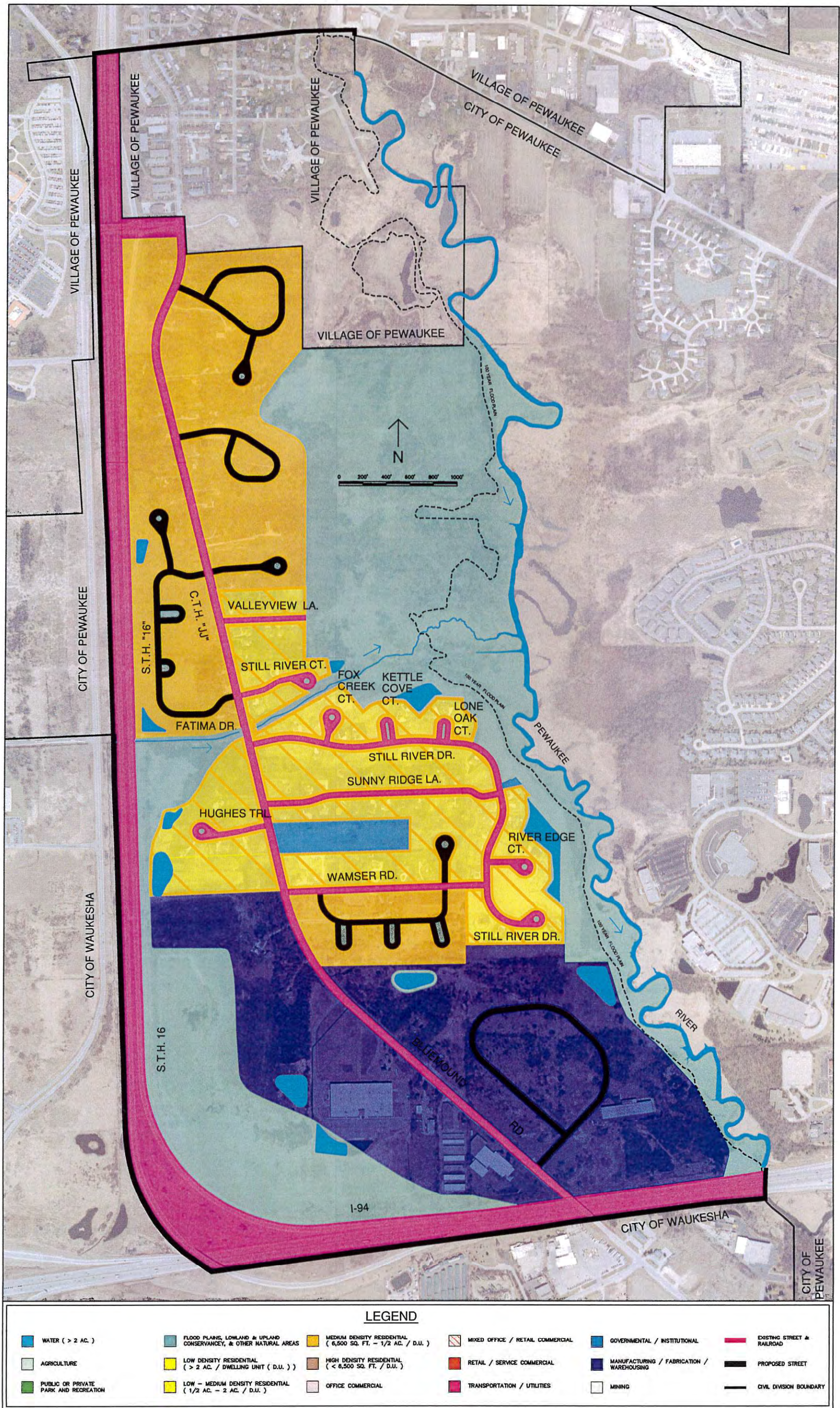


MAP NO. 11
CITY CENTER NEIGHBORHOOD PLAN - 2050



MAP NO. 12

NORTH BLUEMOUND NEIGHBORHOOD PLAN - 2050

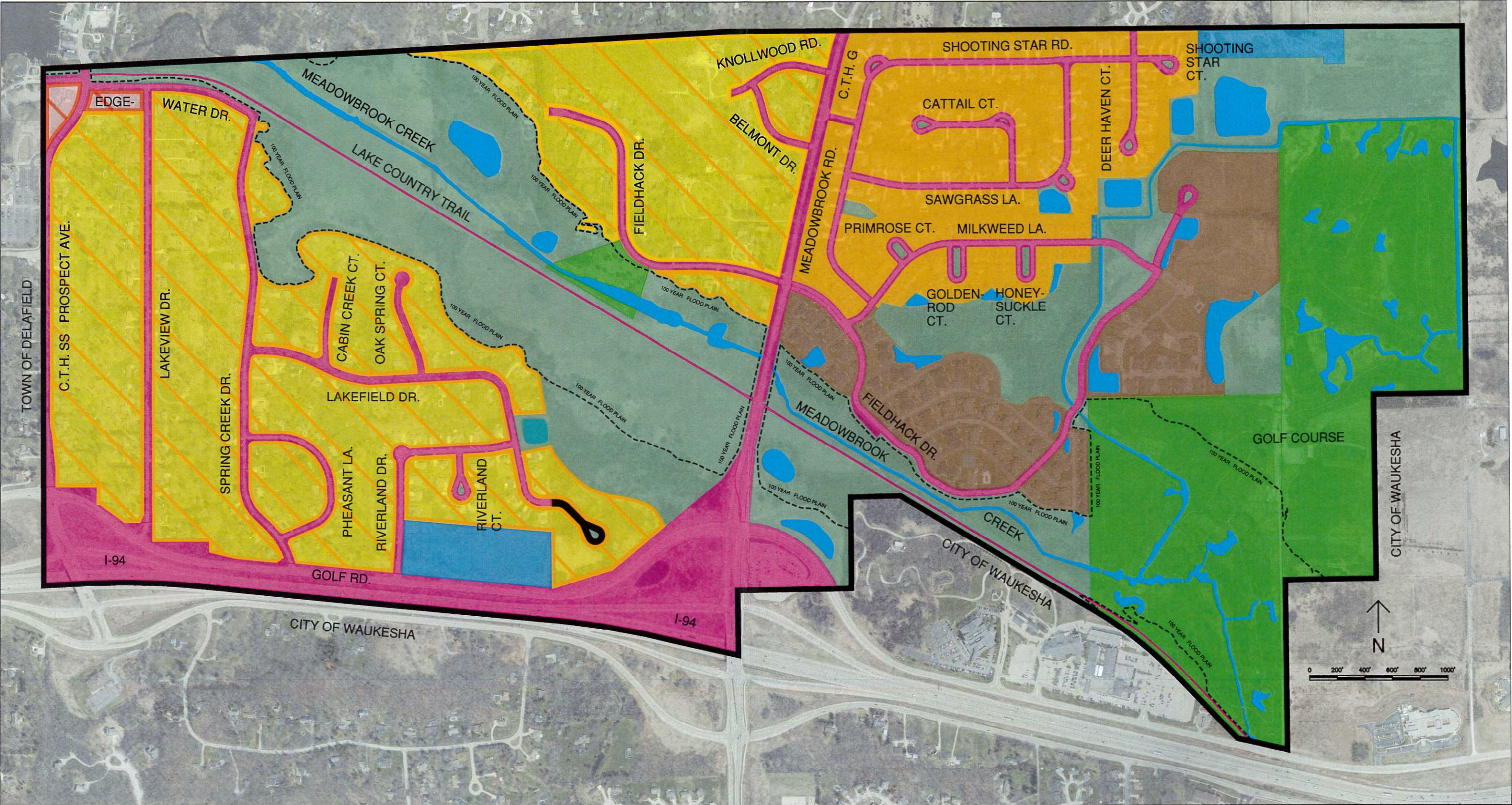


MAP NO.13 SOUTH LAKE NEIGHBORHOOD PLAN - 2050



LEGEND					
WATER (> 2 AC.)	FLOOD PLANS, LOWLAND & UPLAND CONSERVANCY, & OTHER NATURAL AREAS	MEDIUM DENSITY RESIDENTIAL (< 6,500 SQ. FT. - 1/2 AC. / D.U.)	MIXED OFFICE / RETAIL COMMERCIAL	GOVERNMENTAL / INSTITUTIONAL	EXISTING STREET & RAILROAD
AGRICULTURE	LOW DENSITY RESIDENTIAL (> 2 AC. / DWELLING UNIT (D.U.))	HIGH DENSITY RESIDENTIAL (< 6,500 SQ. FT. / D.U.)	RETAIL / SERVICE COMMERCIAL	MANUFACTURING / FABRICATION / WAREHOUSING	PROPOSED STREET
PUBLIC OR PRIVATE PARK AND RECREATION	LOW - MEDIUM DENSITY RESIDENTIAL (1/2 AC. - 2 AC. / D.U.)	OFFICE COMMERCIAL	TRANSPORTATION / UTILITIES	MINING	CIVIL DIVISION BOUNDARY

MAP NO.14 MEADOWBROOK CREEK NEIGHBORHOOD PLAN - 2050



LEGEND					
WATER (> 2 AC.)	FLOOD PLAINS, LOWLAND & UPLAND CONSERVANCY, & OTHER NATURAL AREAS	MEDIUM DENSITY RESIDENTIAL (6,500 SQ. FT. - 1/2 AC. / D.U.)	MIXED OFFICE / RETAIL COMMERCIAL	GOVERNMENTAL / INSTITUTIONAL	EXISTING STREET & RAILROAD
AGRICULTURE	LOW DENSITY RESIDENTIAL (> 2 AC. / DWELLING UNIT (D.U.))	HIGH DENSITY RESIDENTIAL (< 6,500 SQ. FT. / D.U.)	RETAIL / SERVICE COMMERCIAL	MANUFACTURING / FABRICATION / WAREHOUSING	PROPOSED STREET
PUBLIC OR PRIVATE PARK AND RECREATION	LOW - MEDIUM DENSITY RESIDENTIAL (1/2 AC. - 2 AC. / D.U.)	OFFICE COMMERCIAL	TRANSPORTATION / UTILITIES	MINING	CIVIL DIVISION BOUNDARY

DATE ADOPTED: _____

MAP NO.15

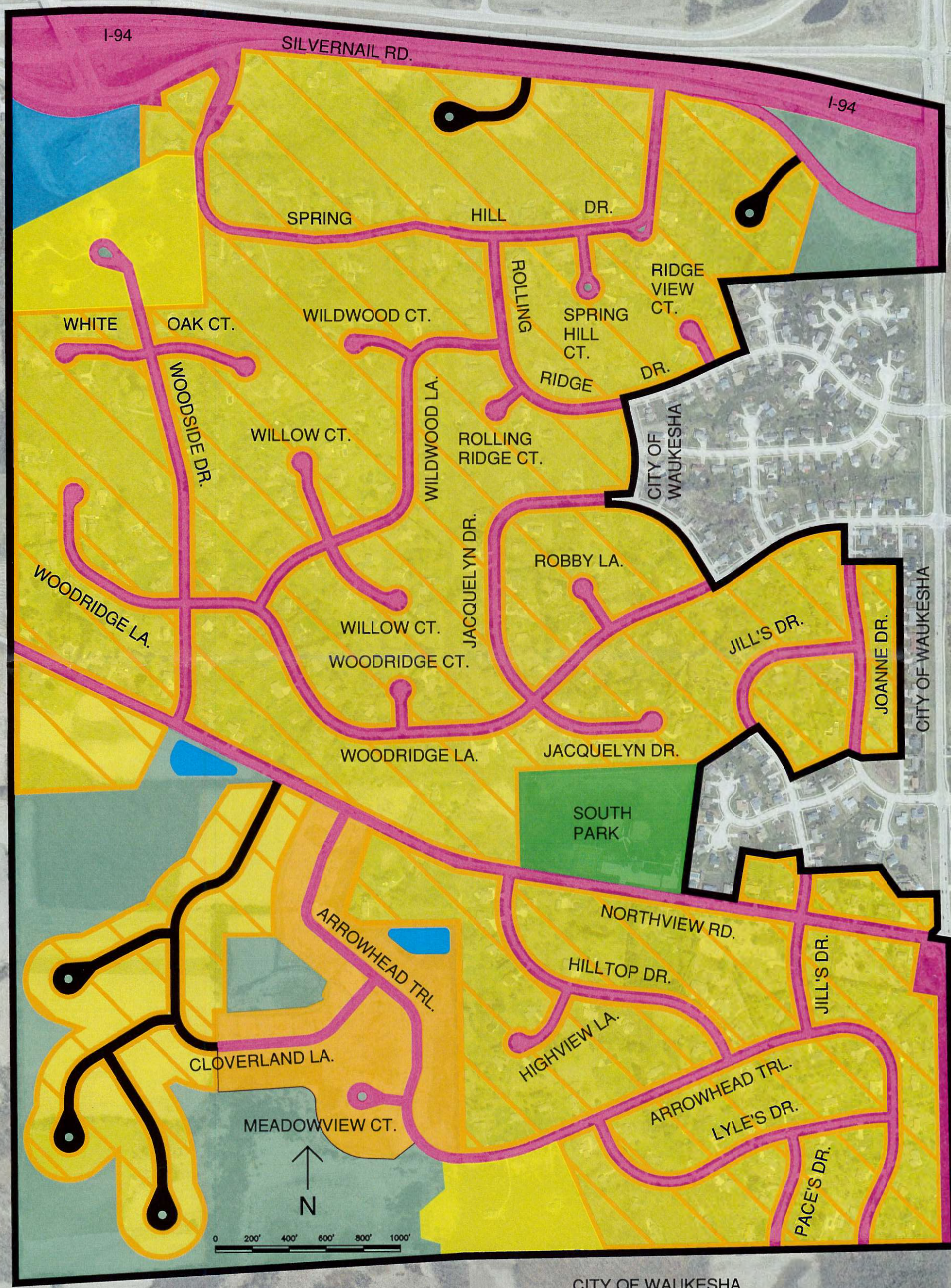
NORTHVIEW HILLS NEIGHBORHOOD PLAN - 2050

Page 4 of 4

TOWN OF DELAFIELD

TOWN OF DELAFIELD

CITY OF WAUKESHA



LEGEND

WATER (> 2 AC.)	FLOOD PLAINS, LOWLAND & UPLAND CONSERVANCY, & OTHER NATURAL AREAS	MEDIUM DENSITY RESIDENTIAL (6,500 SQ. FT. - 1/2 AC. / D.U.)	MIXED OFFICE / RETAIL COMMERCIAL	GOVERNMENTAL / INSTITUTIONAL	EXISTING STREET & RAILROAD
AGRICULTURE	LOW DENSITY RESIDENTIAL (> 2 AC. / DWELLING UNIT (D.U.))	HIGH DENSITY RESIDENTIAL (< 6,500 SQ. FT. / D.U.)	RETAIL / SERVICE COMMERCIAL	MANUFACTURING / FABRICATION / WAREHOUSING	PROPOSED STREET
PUBLIC OR PRIVATE PARK AND RECREATION	LOW - MEDIUM DENSITY RESIDENTIAL (1/2 AC. - 2 AC. / D.U.)	OFFICE COMMERCIAL	TRANSPORTATION / UTILITIES	MINING	CIVIL DIVISION BOUNDARY

DATE ADOPTED: _____

Page 17 of 17

CITY OF PEWAUKEE
BIKE AND PEDESTRIAN PATH PLANNING COMMITTEE AGENDA ITEM 5.

DATE: April 18, 2018

DEPARTMENT: Clerk/Treasurer

PROVIDED BY:

SUBJECT:

Update Related to the Safety Brochure [Ford]

BACKGROUND:

FINANCIAL IMPACT:

RECOMMENDED MOTION:

ATTACHMENTS:

Description

Safety Brochure

BICYCLISTS:

RIDE RIGHT

FOLLOW THE RULES OF THE ROAD

- Ride with traffic and obey the same laws as motorists.
- Use the rightmost lane that heads in the direction that you are traveling.
- Obey all traffic control devices, such as stop signs, lights, and lane markings.
- Always look back when changing lane position. Use hand and arm signals to indicate your intention to stop, merge or turn.

BE VISIBLE

- Ride where drivers can see you, 3 feet from the edge of the roadway and parked cars.
- At night, use a white front light and red rear light or reflector. Wear reflective tape or clothing if practical.

BE PREDICTABLE

- Ride in a straight line. Do not swerve between parked cars.
- Make eye contact with motorists to let them know you are there.
- Adults should not ride on the sidewalk.

WEAR HELMET PROPERLY

- Make sure that the helmet fits on top of your head, not tipped back or forward.
- After a crash or any impact that affects your helmet, visible or not, replace it immediately.

SHARE & BE AWARE

- Be aware of traffic around you and be prepared to take evasive action. Be extra alert at intersections.
- Learn braking and turning techniques to avoid crashes.
- Yield to pedestrians on trails and in crosswalks



DRIVERS:

SHARE & BE AWARE

STOP to let people cross the street

The law requires motorists and bicyclists yield the right of way to pedestrians at crosswalks. People who drive and people who bike must stop for a person waiting at the curb in a crosswalk to allow them to cross.

WATCH for people on bikes

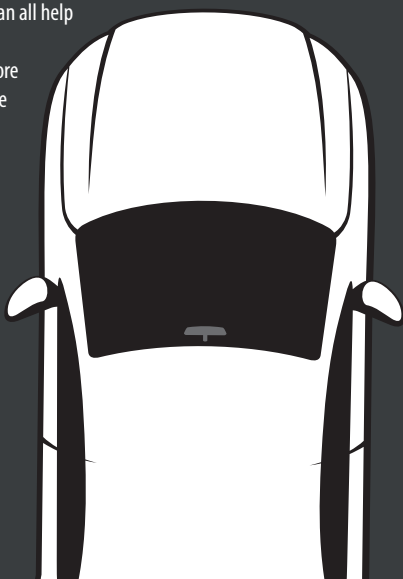
Bicycles are legal vehicles under the law and are allowed to operate on nearly all Wisconsin roadways. The law also requires that motorists give **AT LEAST THREE FEET** when passing someone on a bicycle. Do not swerve into oncoming traffic to pass a bicyclist. Slow and then wait until it is clear before passing.

MIND the speed limit

Speeding is dangerous. Even 5 MPH over the limit is still **OVER** the limit. Increased speed can mean the difference between an injury or death in a crash with a person who is walking or biking.

OBEY all laws and treat all other road users with courtesy and respect

People who walk need to cross at crosswalks, not mid-block or between parked cars. People who bike and people who drive need to stop at stop signs and obey all other traffic laws. We can all help make our streets and our communities safer and more pleasant for everyone if we follow the Share and Be Aware Pledge.



CITY OF PEWAUKEE
BIKE AND PEDESTRIAN PATH PLANNING COMMITTEE AGENDA ITEM 6.

DATE: April 18, 2018

DEPARTMENT: Clerk/Treasurer

PROVIDED BY:

SUBJECT:

Discussion to Select the Next Meeting Date and List Possible Future Topics

BACKGROUND:

FINANCIAL IMPACT:

RECOMMENDED MOTION: