



**Department of Public Works
Engineering Division**

W240N3065 Pewaukee Road • Pewaukee, WI 53072

Phone: (262) 691-0804 • Fax: (262) 691-5729

Email: publicworks@pewaukee.wi.us

**PUBLIC WORKS COMMITTEE
MEETING NOTICE AND AGENDA**

Thursday, August 26, 2021

4:00 PM

City Hall Common Council Chambers
W240N3065 Pewaukee Road Pewaukee, WI 53072

-
1. Call to Order and Pledge of Allegiance
 2. Public Comment - Please limit your comments to 2 minutes, if further time for discussion is needed please contact your local Alderperson prior to the meeting.
 3. Communications
 - 3.1. Discussion and possible action regarding a Public Works Newsletter.
 - 3.2. Discussion and possible action regarding the Lasko Drainage Complaint located at N239W2317 Hawks Meadow Ct.
 4. Discussion and Action Regarding the Minutes of June 24, 2021
 - 4.1. Discussion and Action Regarding the Minutes of June 24, 2021
 5. Old Business
 6. Storm Water Management Division
 7. Water and Sewer Division
 8. Status Reports
 - 8.1. Status of Well #1 Motor Failure
 - 8.2. Status Update on Well #5 Reservoir Roof Repair & Pump Replacement – Award to Lowest Qualified Bidder
 9. Engineering Division
 - 9.1. Discussion and possible action regarding the Northview Road Sidewalk Extension.
 - 9.2. Discussion and possible action regarding We Energies LED Street Light Conversion for Municipalities.
 - 9.3. Discussion and possible action regarding supporting a City-wide Tree Inventory.
 10. Highway Division
 - 10.1. Discussion on the new Department of Public Works Highway Garage.
 - 10.2. Discussion and possible action to partner with Waukesha County Sheriff Department in

purchasing electronic speed signs.

11. Public Comment - Please limit your comments to 2 minutes, if further time for discussion is needed please contact your local Alderperson prior to the meeting.
12. Adjournment

Magdelene Wagner
Director of Public Works

August 23, 2021

NOTICE

It is possible that members of other governmental bodies of the municipality may be in attendance to gather information that may form a quorum. At the above stated meeting, no action will be taken by any governmental body other than the governmental body specifically referred to above in this notice.

Any person who has a qualifying disability under the Americans with Disabilities Act that requires the meeting or materials at the meeting to be in an accessible format must contact the DPW Main Office, at (262) 691-0804 by 12:00 p.m. the Tuesday prior to the meeting so that arrangements may be made to accommodate your request.

**CITY OF PEWAUKEE
PUBLIC WORKS COMMITTEE AGENDA ITEM 3.1.**

DATE: August 26, 2021

DEPARTMENT: Public Works

PROVIDED BY: Magdelene Wagner

SUBJECT:

Discussion and possible action regarding a Public Works Newsletter.

BACKGROUND:

Over the last couple of years, the Public Works Department has been struggling with communication with the residents. Many residents have been complaining that they are not aware of upcoming road projects, maintenance work, in general what our department does, and miscellaneous information regarding our department.

The City Budget is posted on the City's website which lists the upcoming road projects. The City website also has a webpage which details the road projects and storm water projects. I will admit that we get busy and sometimes the webpages are not updated immediately. However, it does not appear our website is the avenue that residents want this information from. I also know that not every person in our Community has Facebook or other digital platforms and in my opinion, it is difficult to communicate some of our more complex issues using those platforms.

I've been thinking a great deal about this and would like to send out a Public Works Newsletter to the entire community. I am thinking a quarterly or twice a year newsletter which contains pertinent information for the upcoming seasonal items and the future projects that will be occurring in the community.

I would like to discuss:

1. Do you like the idea of a newsletter? Other ideas to communicate this information?
2. Quarterly or twice per year?
3. Content ideas.
4. Hard Copy vs Digital.

FINANCIAL IMPACT:

The cost of each newsletter for the entire City is estimated to be between \$1,750 and \$2,500 for each newsletter, depending on number of pages and postage.

RECOMMENDED MOTION:

Public Works Committee recommend the Public Works Department develop and mail a newsletter twice per year (Spring/Fall).

**CITY OF PEWAUKEE
PUBLIC WORKS COMMITTEE AGENDA ITEM 3.2.**

DATE: August 26, 2021

DEPARTMENT: Public Works

PROVIDED BY: Magdelene Wagner

SUBJECT:

Discussion and possible action regarding the Lasko Drainage Complaint located at N239W2317 Hawks Meadow Ct.

BACKGROUND:

Alderperson Wamser requested this item to be added to the Public Works Agenda on behalf of Scott Lasko (N239W2317 Hawks Meadow Court). Mr. Lasko has created some videos for you to view which are located at:

<https://www.youtube.com/channel/UCGmQ2LMXVTBA1kDH249tC3A/videos>

I've attached the historic and recent aerials and topography for the area. Also attached is the grading plan for the development and the lot in question.

FINANCIAL IMPACT:

RECOMMENDED MOTION:

ATTACHMENTS:

Description

Hawks Meadow Approved Grading Plan

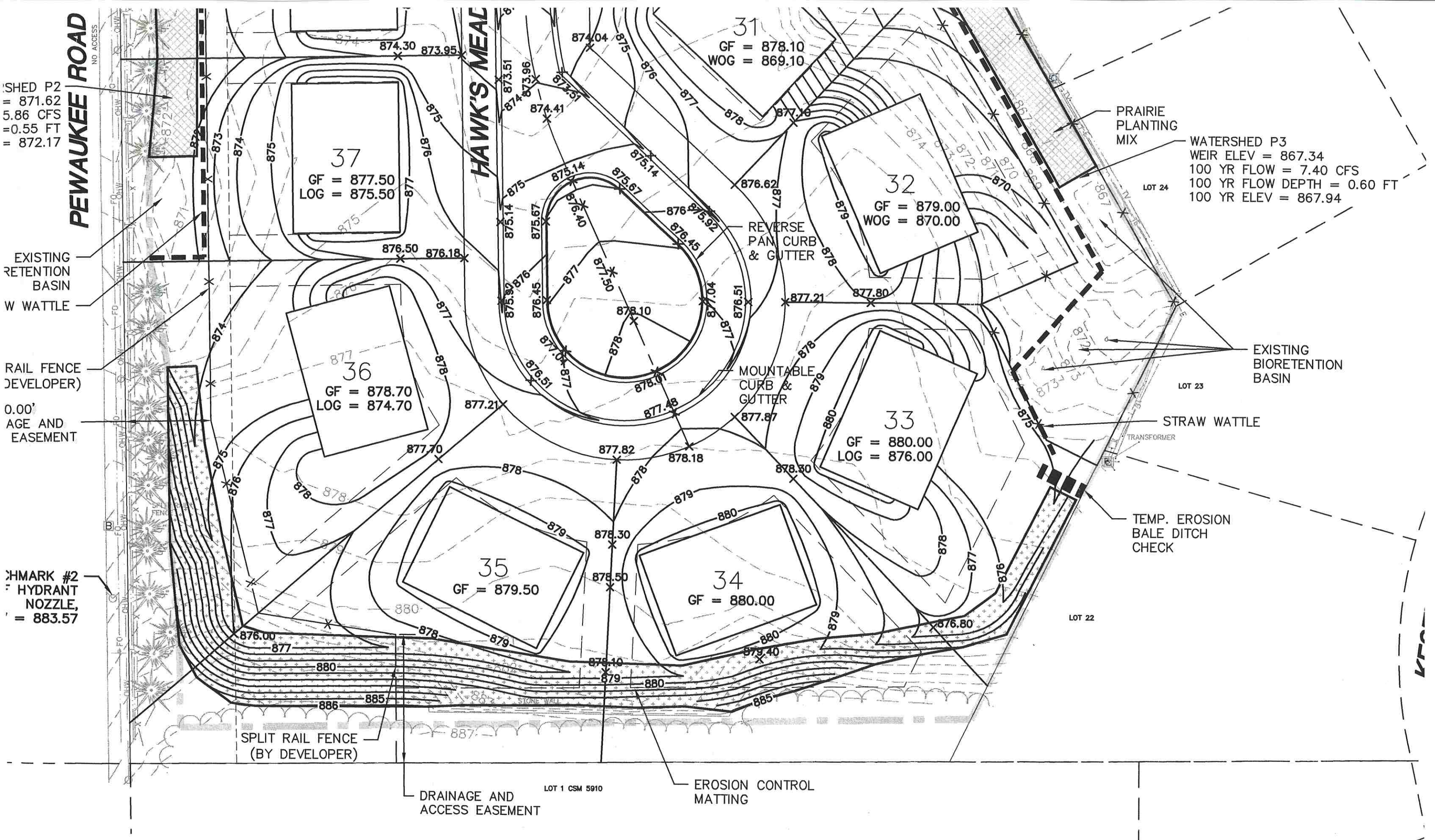
Lot 35 Grading plan

2020 aerial and 2015 topo

2015 aerial and topo

2007 aerial and 2005 topo

2005 aerial and topo



HOLLAND & THOMAS, L.L.C.

LAND SURVEYORS

202 West Street Johnson Creek, WI 53038 (920) 699-3305

LEGEND: These standard symbols may be found in the drawing.

- Lot Corner (Found) w/desc.
- Elec. Trans. Box
- ⊕ Man Hole
- Utility Pedestal
- ⊗ Fire Hydrant
- ⊕ Water Valve
- G Proposed Gas Meter
- ⊥ Lateral End
- ⊕ Offset Stake
- Easement Boundary
- - - Setback Line
- ⊖ Rock Retaining Wall
- ⊖ Treeline
- 879 — Proposed Contours
- - - 879 - - - Existing Contours

GRADE DETAIL

FOR LOT 35 OF HAWK'S MEADOW ADDITION NO.1, AND BEING A PART OF THE SW 1/4 OF THE SOUTHWEST QUARTER OF SECTION 14, TOWN 7 NORTH, RANGE 19 EAST, CITY OF PEWAUKEE, WAUKESHA COUNTY, WISCONSIN.

C1
RAD = 75.00
ARC = 60.88'
CHD = 59.22'
C.B. = N 64°-05'-16" W

**CONDITIONALLY
APPROVED**

PEWAUKEE DEPARTMENTS
ZONING ADMINISTRATION

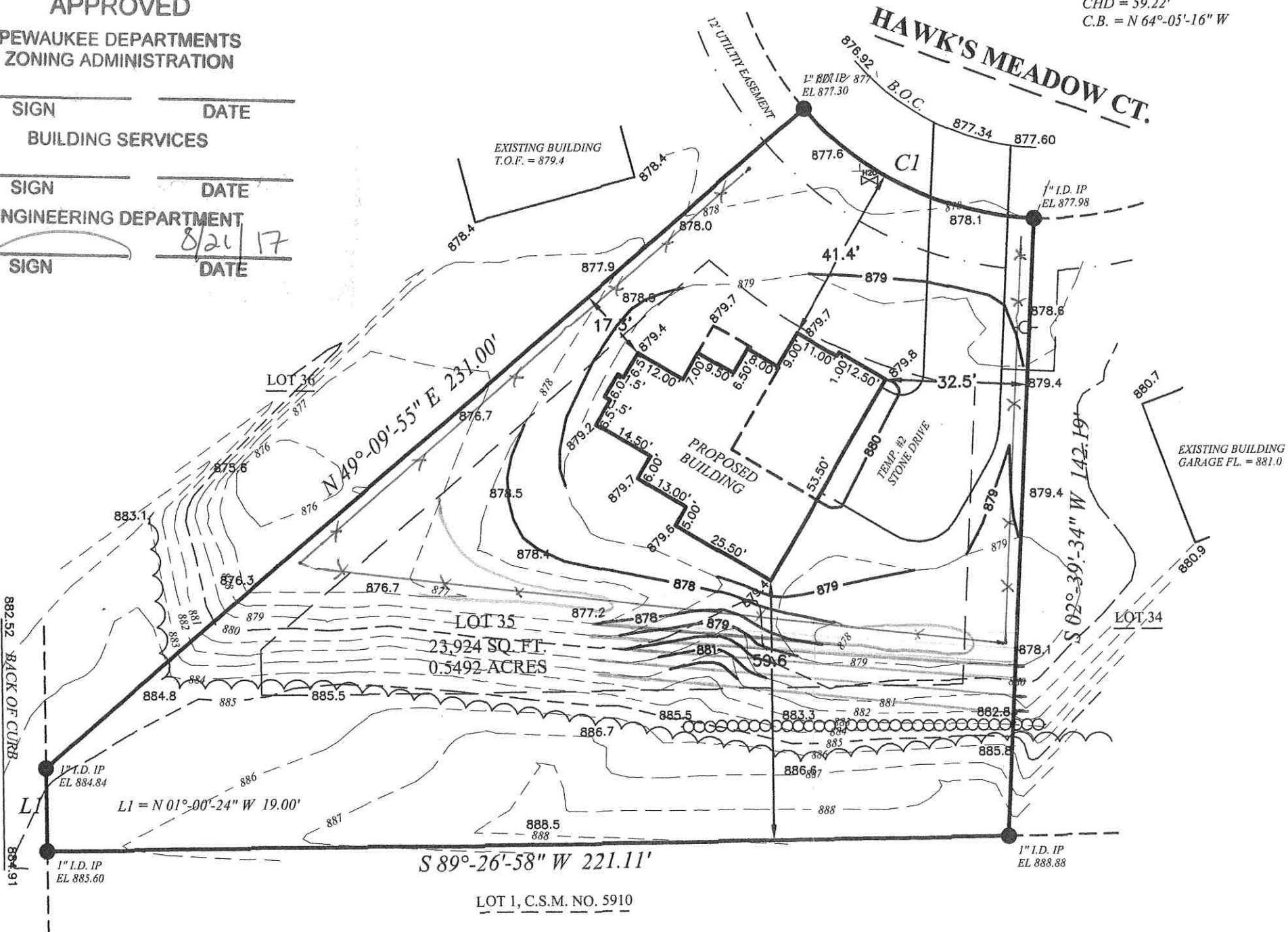
SIGN DATE
BUILDING SERVICES

SIGN DATE

ENGINEERING DEPARTMENT

SIGN DATE

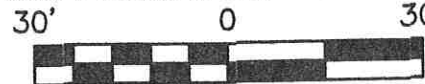
(A.K.A. PEWAUKEE ROAD)
STATE HIGHWAY 164
(R-O-W VARIES)



PROPOSED TOP OF FOUNDATION: 880.67
PROPOSED GARAGE FLOOR EL: 880.33
PROPOSED FINAL YARD GRADE: 880.00
PROPOSED TOP OF FOOTINGS: 872.67
DRIVEWAY SLOPE: 3.0% TO BACK OF CURB
(ASSUMING 8' WALL - CHECK PLAN)

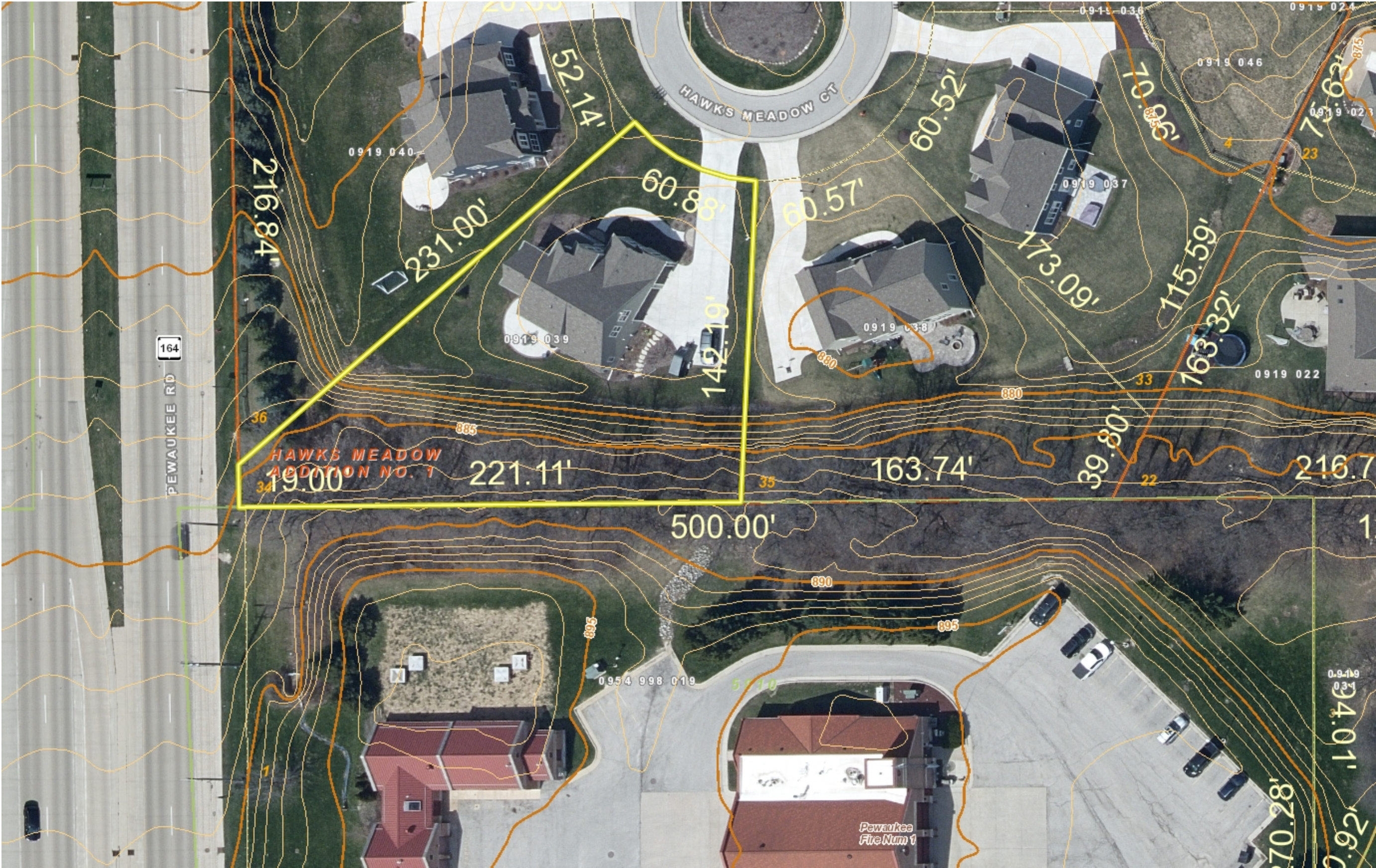
NOTE: EXCAVATOR AND MASON MUST VERIFY AT LEAST TWO BENCHMARKS SHOWN ABOVE.

BEARINGS ARE REFERENCED TO THE WEST LINE OF THE SOUTHWEST QUARTER OF SECTION 14-07-19, WHICH IS ASSUMED TO BEAR N 00°-10'-12" W.



OWNER: Lot 35 Spec Home

BUILDER: Aspen Homes, Inc.
325 Oakton Ave., Ste. 202
Pewaukee, WI 53072
Ph: (262) 695-4485



- Intermediate Contours
- Intermediate Contour
 - Intermediate Depression
- Index Contours
- Index Contour
 - Index Depression
- Municipal Boundary_2K
- FacilitySites_2K_Labels
- Lots_2K
- Lot
 - Unit
 - General Common Element
 - Outlot
- SimultaneousConveyance_2K
- Assessor Plat
 - CSM
 - Condominium
 - Subdivision
- Cartoline_2K
- <all other values>
 - EA-Easement_Line
 - PL-DA
 - PL-Extended_Tie_line
 - PL-Meander_Line
 - PL-Note
 - PL-Tie
 - PL-Tie_Line
- Road Centerlines_2K
- Railroad_2K
- TaxParcel_2K
- Waterbodies_2K_Labels
- Waterlines_2K_Labels



Notes

2020 aerial and 2015 topo

0 42.16 Feet

The information and depictions herein are for informational purposes and Waukesha County specifically disclaims accuracy in this reproduction and specifically admonishes and advises that if specific and precise accuracy is required, the same should be determined by procurement of certified maps, surveys, plats, Flood Insurance Studies, or other official means. Waukesha County will not be responsible for any damages which result from third party use of the information and depictions herein, or for use which ignores this warning.



- Intermediate Contours
- Intermediate Contour
 - Intermediate Depression
- Index Contours
- Index Contour
 - Index Depression
- Municipal Boundary_2K
- FacilitySites_2K_Labels
- Lots_2K
- Lot
 - Unit
 - General Common Element
 - Outlot
- SimultaneousConveyance_2K
- Assessor Plat
 - CSM
 - Condominium
 - Subdivision
- Cartoline_2K
- <all other values>
 - EA-Easement_Line
 - PL-DA
 - PL-Extended_Tie_line
 - PL-Meander_Line
 - PL-Note
 - PL-Tie
 - PL-Tie_Line
- Road Centerlines_2K
- Railroad_2K
- TaxParcel_2K
- Waterbodies_2K_Labels
- Waterlines_2K_Labels



Notes

2015 aerial and 2015 topo

0 42.16 Feet

The information and depictions herein are for informational purposes and Waukesha County specifically disclaims accuracy in this reproduction and specifically admonishes and advises that if specific and precise accuracy is required, the same should be determined by procurement of certified maps, surveys, plats, Flood Insurance Studies, or other official means. Waukesha County will not be responsible for any damages which result from third party use of the information and depictions herein, or for use which ignores this warning.



- 10' Contour Labels 2005
- Contour Lines 2005
- Index Contour Line
 - Index Contour Line Approx
 - Index Depression Line
 - Index Depression Line Approx
 - Intermed Depression Line
 - Intermed Depression Line Approx
 - Intermediate Contour Line
 - Intermediate Contour Line Approx
- Municipal Boundary_2K
- FacilitySites_2K_Labels
- Lots_2K
- Lot
 - Unit
 - General Common Element
 - Outlot
- SimultaneousConveyance_2K
- Assessor Plat
 - CSM
 - Condominium
 - Subdivision
- Cartoline_2K
- <all other values>
 - EA-Easement_Line
 - PL-DA
 - PL-Extended_Tie_line
 - PL-Meander_Line
 - PL-Note
 - PL-Tie
 - PL-Tie_Line
- Road Centerlines_2K
- Railroad_2K
- TaxParcel_2K
- Waterbodies_2K_Labels
- Waterlines_2K_Labels



Notes

2007 aerial and 2005 topo

0 42.16 Feet

The information and depictions herein are for informational purposes and Waukesha County specifically disclaims accuracy in this reproduction and specifically admonishes and advises that if specific and precise accuracy is required, the same should be determined by procurement of certified maps, surveys, plats, Flood Insurance Studies, or other official means. Waukesha County will not be responsible for any damages which result from third party use of the information and depictions herein, or for use which ignores this warning.



- 10' Contour Labels 2005
- Contour Lines 2005
- Index Contour Line
 - Index Contour Line Approx
 - Index Depression Line
 - Index Depression Line Approx
 - Intermed Depression Line
 - Intermed Depression Line Approx
 - Intermediate Contour Line
 - Intermediate Contour Line Approx
- Municipal Boundary_2K
- FacilitySites_2K_Labels
- Lots_2K
- Lot
 - Unit
 - General Common Element
 - Outlot
- SimultaneousConveyance_2K
- Assessor Plat
 - CSM
 - Condominium
 - Subdivision
- Cartoline_2K
- <all other values>
 - EA-Easement_Line
 - PL-DA
 - PL-Extended_Tie_line
 - PL-Meander_Line
 - PL-Note
 - PL-Tie
 - PL-Tie_Line
- Road Centerlines_2K
- Railroad_2K
- TaxParcel_2K
- Waterbodies_2K_Labels
- Waterlines_2K_Labels



Notes

2005 aerial and topo

0 42.16 Feet

The information and depictions herein are for informational purposes and Waukesha County specifically disclaims accuracy in this reproduction and specifically admonishes and advises that if specific and precise accuracy is required, the same should be determined by procurement of certified maps, surveys, plats, Flood Insurance Studies, or other official means. Waukesha County will not be responsible for any damages which result from third party use of the information and depictions herein, or for use which ignores this warning.

**CITY OF PEWAUKEE
PUBLIC WORKS COMMITTEE AGENDA ITEM 4.1.**

DATE: August 26, 2021

DEPARTMENT: PW - Water/Sewer

PROVIDED BY:

SUBJECT:

Discussion and Action Regarding the Minutes of June 24, 2021

BACKGROUND:

FINANCIAL IMPACT:

RECOMMENDED MOTION:

ATTACHMENTS:

Description

6-24-2021 Minutes

In Attendance:

Mayor Steve Bierce, Committee Members M. Kreiter, D. Swan, and Alderman J. Wamser.

Absent: J. Tormey

Also in Attendance:

DPW Director M. Wagner, Chief Engineer-Utilities, R. Wirtz, Utility Manager J. Mueller, Utility Billing Specialist R. Reed, and Administrative Assistant S. Smaxwill.

Call to Order and Pledge of Allegiance

Mayor Bierce called the meeting to order at 4:00 p.m. and requested everyone stand for the Pledge of Allegiance.

1. Public Comments – None
2. Communications – None
3. Discussion and Action Regarding the Minutes

Motion was made and seconded (D. Swan, M. Kreiter) to approve the April 22, 2021 meeting minutes. Motion Passed: 4-For, 0-Against

4. Old Business – None
5. Storm Water Management Division
6. Water and Sewer Division

- 6.1. Discussion and Possible Action Regarding Well #3 and #6 Electric Service Update MCC Replacements

Ms. Mueller reported on issues at the North Avenue deep well and shallow well facilities with the motors taking hits from electric surges and multiple failures over the last 30 years. She suspects that part of the problem is that we have dirty power coming into the location and motor control centers are becoming old. In order to help with the surges we recommend updating all of the MCCs. We have been working with Ruekert-Mielke (RM) to put together a design and proposal for replacing the MCCs and upgrading the electric for the shallow well. The proposal for the preliminary design and bid from RM is \$37,272 (estimate). The project estimated cost is \$200,000 for the shallow well building, and then they are putting together a mandatory alternate to upgrade the reservoir building which contains

three service pumps for an additional \$149,500 (estimate). Ms. Mueller said it makes sense to do them all at one time because they are all approximately 30three years old, but the bids are broken into two alternatives, so we will see what will happen.

Mayor Bierce asked if the person who designed it is still around after 30 some years? Ms. Wagner said yes.

Ms. Mueller stated this does not require a motion, it is more informative and for an endorsement for the Common Council.

A motion was made and seconded (J. Wamser, M. Kreiter) to endorse the electric service update MCC replacements to the Common Council. Motion Passed: 4-For, 0-Against.

6.2. Discussion and Possible Action Regarding the Well 5 HMO Treatment Facility & Building

Ms. Mueller reported on issues previously discussed at the 4/22/21 meeting for the Well 5 facility where radium contamination was identified. The Utility was trying to bid out the construction of a radium removal treatment system earlier this winter when we realized that the well had collapsed. Several attempts were made to clear out the collapse with no success in removing any of the rubble.

Staff discussions with Ruekert-Mielke determined that the well is not viable moving forward. The Utility notified the DNR that we do not think that it is a viable well to move forward with the treatment system, and that we would like to proceed with looking for alternate ways of serving that area of the city. Options include either extending water main to bring in a second water main feed into that industrial park, or perhaps having an alternate well site somewhere nearby which does not seem feasible at this time. We are asking the DNR to allow us to temporarily install a new pump into that hole, to avoid where some of that rubble is but still allow us the ability to use that well while we are doing the rest of these investigations. We will need to repair the reservoir roof that is onsite because that reservoir leaks, but we need to have some alternate type of feed/supply system in that location to maintain the water fire protection and quantity in the event of a water main break on that end of town. Ms. Mueller spoke with the fire chief who felt strongly about moving forward with this option, even on a temporary basis.

Mayor Bierce questioned if this is the same well we thought we had an answer to in Waukesha - and then we didn't. Ms. Wagner said yes.

Mayor Bierce asked, "didn't we discover that we also wanted to abandon this because of the proximity of where Payne & Dolan will eventually be blasting?" Ms. Wagner said yes.

Mr. Wamser mentioned the fault line.

Ms. Mueller stated that it is all of these compounding factors that are playing into this decision - the fault line, potential quarrying in the near future, and they just keep piling on, so we made the decision that it is not worth putting \$3M into it.

Mr. Wamser: Is there a site available in the Tacoma Hills area?

Ms. Mueller stated she did not believe are any suitable shallow well locations anywhere in Tacoma Hills.

Mr. Wamser said a lot of water from Waukesha flows down that way, and they are abandoning that site, so is there somewhere close to that?

Ms. Mueller stated that is still in the proximity of the fault line and there is no shallow water there because of the quarry so we would be looking at putting in another deep well which in turn would be getting us back to adding another treatment plant.

Ms. Wagner said she spoke with Payne & Dolan, who stated they are looking at mining in the area to the south of Bluemound. P&D spoke of mining in their existing quarry west of Redford and south of Bluemound because they are at their limit for their set back so they can't go down any further.

Ms. Mueller went over the various areas the Utility is investigating for potential water main. She stated there is no good way to serve it. She has asked Ruekert-Mielke to put together some preliminary numbers.

Mayor Bierce asked when coming across from here or there are you just talking about instead of drilling a new well, just building a redundancy with the wells that we already own? Ms. Mueller said yes, looping the water main. Mayor Bierce stated that doesn't really replace the volume that you are losing. Ms. Mueller said that is correct, that is phase I of replacing that site. Then eventually we would need to pick up the capacity loss from losing the well site.

Mayor Bierce: But then with your scenario the capacity would not have to come from that area, it could come from anywhere in this redundant loop, it could come from the other side of town. Ms. Mueller stated it is not an ideal situation, we have no shallow well locations in that area, but the loop will help ensure that there is water main feeding that area at all times. We will still have to go back and look at what the loss capacity and what the loss reservoir volumes would be and how we could make those up.

Ald. Wamser stated we were talking about looping that area a couple years back. Ms. Wagner stated that there are lot of complicating factors involved such as hard areas to cross like the freeway or a river and monitoring environmental issues. It is still going to cost \$3M to complete the looping of the water main system, but we are just accelerating that because there are no shallow well sites available. Given the proximity of the Waukesha fault line we are very limited on where we can put it so we don't end up with the same issues as this current well.

Mayor Bierce asked if we might be done finding shallow wells in Pewaukee, period? Ms. Wagner said we talked about refreshing a study that was done several years back to see if any new technologies have come up that would show any new sites, but the last good shallow site was in Still River.

Ms. Mueller stated that are potential sites for a shallow well on the west side of town. She said we purchased an additional lot in the Still River subdivision for a future deep well site where we can blend the deep and shallow, so we do have an alternate location to get the capacity in a quicker timeframe. It would be part of Phase 2, potentially.

Mr. Swan liked the idea of a reservoir over there. He asked what happens if we didn't do the well pump, but just fixed the roof? Ms. Mueller said we need to put a pump in the well directly to the water system, bypassing the reservoir, because we need the standby water pressure and volume so that if something would happen in the industrial park we would have sufficient water available for the fire department, and we would not have that without the reservoir in service.

Ald. Wamser asked about another water tower. Ms. Mueller stated that we are looking for something short-term, so to put a new rubber roof on a reservoir to get 2-3 years of use would be cheaper than putting in a water tower. She said a pitched roof would not be a viable option.

A motion was made and seconded (J. Wamser, S. Bierce) to move the Well 5 HMO Treatment Facility & Building forward to the Common Council. Motion Passed: 3-For, 1-Against.

6.3 Discussion and Possible Action Regarding the Compliance Maintenance Annual Report (CMAR) for the Sewer Collection System

Ms. Mueller reported on the CMAR annual report for the DNR, which is basically a report card on how we do with maintaining our sewer system. She stated that we got an A across the board. We were not able to get all our sewer cleaning done last year because of Covid distractions. Typically, we clean one-third of our sewer system each year and that didn't happen, but we still did good.

Mayor Bierce stated good job.

A motion was made and seconded (D. Swan, M. Kreiter) to accept the Compliance Maintenance Annual Report (CMAR) for the Sewer Collection System. Motion Passed: 4-For, 0-Against.

7. Status Reports – None

8. Engineering Division

8.1. Discussion regarding the Springdale Estates Survey Results

Ms. Wagner reported on a survey that was sent out to residents in the Springdale Estates subdivision regarding safety concerns with pedestrians and cars in the streets and having to walk around them. The survey questioned whether residents wanted sidewalks along the streets, and that is really what the people focused on. The majority of responses were against putting in sidewalks. Ms. Wagner provided the committee with the survey questions and the comments residents had regarding sidewalks in their neighborhoods.

Mayor Bierce thought the survey was a great idea and gave the people the option to let us know what they really want. He was glad for the input and said this could help us form opinions moving forward.

Ms. Wagner stated that the Common Council took this up and decided there will be no change in that subdivision. No action is required by the committee.

Mr. Swan mentioned one suggestion in the survey results regarding LED lighting. He asked if the city pays for the electricity or the homeowner?

Ms. Wagner stated that the lights that they are referring to are their own private lights that they were required to be installed as part of the subdivision. Homeowners would have to pursue LED lighting on their own. She said the city does not light up subdivisions, only intersections. She stated that many of these private lights need to be repaired or replaced.

9. Highway Division

9.1 Discussion regarding the proposed Department of Public Works Facility

Ms. Wagner provided information about the proposed DPW facility in the committee information packets. She reported that the current facility is out of code on many levels and far too small for our staff and equipment. For the past 18 months we have been going through an evaluation of the yard and building and

what Mayor Bierce will be signing tonight is a closing on the Trinity property on Green Road and Duplainville Road. The new garage and shop will be located towards the rear of the site. This new facility will be to code, and will include locker rooms, lunchroom, new highway garage that can store all the equipment we have, and a new repair shop that is up to current standards. There have not been any improvements to the existing garage since 1993. Replacement of the salt shed on this site is shown on land owned by Quad. We are currently in discussions with Quad for four acres, so the salt shed is shown on north side of property (proposed) outside of the 1,000 foot well setback and within the property. This project is moving forward, the Plan commission approved the plans, and we will have rezoning to institutional at the July 19th Common Council meeting. We are currently putting together the bid package for this project and are very excited to have these new facilities for our Highway staff and to improve efficiencies for their operations.

A discussion took place on the actual location site of the property. It will be behind Trinity Church, directly behind the school. The City will own the whole Trinity parcel. Trinity has a one-year lease with the City to operate as a school. We will take over the fields in the back. The total Trinity property is 24 acres and both buildings.

Mr. Swan prefers (1) south opening doors and (2) a drive-thru where they would drive in one way and drive out the other and not have to turn around. Ms. Wagner stated that it is a drive-thru garage. The highway shop and wash bay doors face south.

Ms. Wagner stated the hope is to acquire the Quad property, so we can have the dual entrances, otherwise the entrance will be from Green Road with a circular pad within the yard to turn around. If we get the Quad property, then Duplainville Road will be the main entrance. If not, we will only have the one entrance on Green Road.

Mr. Swan is concerned about taking down buildings. Ms. Wagner stated there are no plans to remove the buildings. She believes that for the long-term we can use the newer schoolhouse that they built, but any use of the existing church is yet to be determined. Ms. Wagner stated that plans are to reuse the school buildings with very little modifications. The church is currently not ADA accessible so modifications would be required; but the intent is to repurpose the building before we would consider tearing it down.

Ald. Wamser stated that we could work with the Parks department. There are Parks programs at different locations, and it would be good to get it centralized in a community center. Ms. Wagner stated it would need to be brought up to ADA compliance, but from DPW point of view, there is no specific use for it right now and it is not in the way of our operations.

Ald. Wamser asked if it was checked out for any toxics or asbestos. Ms. Wagner stated Phase 1 environmental tests did not identify any issues.

Mr. Swan questioned if there was a meeting room at the location that could be used for meetings. Ms. Wagner stated they have a lunchroom where we could do small meetings with a small group of people or for trainings, but it is not the intention to be a regular meeting location.

9.2 Discussion and Possible Action to Install a Dead End Sign at the Intersection of Lincoln Avenue and Oak Street.

Mr. Kreiter did a Google search and found there was a Dead End sign at that intersection on a different pole in 2012. Ms. Wagner was not aware that there was a sign there previously and suggested it must have been taken down for some reason and never put back up.

Mr. Kreiter suggested doing a sign inventory. Ms. Wagner stated that we are currently in the process of replacing all of our signs by plow routes, and as they are replaced they are inventoried. There are currently three routes completed.

The committee agreed to have the sign put back up.

9.3 Discussion and possible action regarding the request to install a street light on Glacier Road between Roger Road and Hickory Grove Road.

Ms. Wagner reported this request came from a resident through the Highway Superintendent because of the number of accidents at the bend in the road on Glacier Road. She said there are very few lights that the city actually funds. This is in an odd location, but there is a lot of history of accidents in this area.

Mr. Kreiter questioned which would be more costly, to install lights or put in a couple of chevrons in each direction. Ms. Wagner stated she did not look into the cost of chevrons.

The committee discussed where on the map the light would be located. Mr. Kreiter said 245 and 225 would be the lot line where the power pole would be. Ms. Wagner recommended to add it to the existing power pole, because it would be most cost effective.

Ald. Wamser like the reflector idea. He suggested surveying the people in view of the light, suggesting some people might consider it a nuisance, or complain it is glaring in their window.

Mr. Kreiter said that west of his complex there were two chevrons put up as a result of an accident.

Ms. Wagner would not consider reducing the speed limit any lower on Glacier Road than its current 35mph.

Further discussion took place regarding the need for the placement of the light in that area and versus other areas of the city.

Ms. Wagner stated she was not aware of the reasons given for the accidents. Mr. Kreiter asked if we had access to the accident reports, were they inattentive driving, what are the reasons? Wagner stated she can look up that information and bring it back for next meeting.

Mayor Bierce stated he has no desire to pursue this request.

The committee agreed to add reflective signs rather than the street light.

A motion was made and seconded (M. Kreiter, D. Swan) to provide reflective signs.

Motion Passed: 4-For, 0-Against.

10. Public Comment - None

11. Adjournment

A motion was made and seconded (D. Swan, J. Wamser) to adjourn the meeting at 4:40 p.m.

Motion Passed: 4-For, 0-Against.

Respectfully Submitted,

Magdelene Wagner
Director of Public Works

CITY OF PEWAUKEE
PUBLIC WORKS COMMITTEE AGENDA ITEM 8.1.

DATE: August 26, 2021

DEPARTMENT: PW - Water/Sewer

PROVIDED BY: Jane Mueller

SUBJECT:

Status of Well #1 Motor Failure

BACKGROUND:

In mid-February of this year, the Utility experienced a motor failure at Well #1 located at City Hall.

The Utility sent out and advertised a Request for Proposals for pulling the pump, diagnostics and replacement of failed piping, pump and motor components. At the Common Council meeting on April 5, 2021, the Common Council awarded the work to Municipal Well & Pump for \$90,591.00.

Municipal Well & Pump completed the installation of a new pump, motor and several feet of column pipe in May 2021 and the well was put back into service on June 1. This well is a prime workhorse for the Utility. Typically, this is our lead well during the work week - turned on Monday morning and turned off on Friday afternoon, running essentially 24 hours per day 5 days a week during the summer.

At 5:30 a.m. on August 4, the pump stopped running after running from June 1 to August 4. Utility staff worked with an electrician and Municipal Well & Pump to troubleshoot the controls, ultimately finding either the motor or cable were bad. The new pump and motor had run only 872.84 hours over 36.5 days.

Municipal Well & Pump once again returned to work on the pump in anticipation that there would be warranty issues. There were no faults found in the cable; the motor was found to have failed. A representative of the motor manufacturer was onsite to witness the test. A replacement motor has been installed and the motor has been returned to the manufacturer for further inspection.

FINANCIAL IMPACT:

RECOMMENDED MOTION:

**CITY OF PEWAUKEE
PUBLIC WORKS COMMITTEE AGENDA ITEM 8.2.**

DATE: August 26, 2021

DEPARTMENT: PW - Water/Sewer

PROVIDED BY: Jane Mueller

SUBJECT:

Status Update on Well #5 Reservoir Roof Repair & Pump Replacement – Award to Lowest Qualified Bidder

BACKGROUND:

At the June 24, 2021 Public Works Committee meeting you were updated on the Well #5 radium contamination and well bore hole failure. The Committee endorsed the recommendation to the Common Council to move forward with the bidding of the roof repair and pump replacement to allow for the temporary use of the well to ensure adequate water service and storage in this water service area of the city.

On August 5, 2021, the Utility opened bids for the Well #5 Roof Repair and Pump Replacement contract. Two bids were received.

- | | | |
|----|----------------------|--------------|
| 1) | J.H. Hassinger, Inc. | \$249,261.00 |
| 2) | Mid City Corporation | \$291,625.00 |

At the August 16, 2021 meeting, the Common Council awarded the lowest qualified bid to J.H. Hassinger for \$249,261.00.

In the fall of 2020, J.H. Hassinger was awarded the contract for the Wispark Reservoir Roof Replacement as the lowest qualified bidder. They successfully completed the project. Overall, we were happy with the work that the contractor performed.

FINANCIAL IMPACT:

RECOMMENDED MOTION:

**CITY OF PEWAUKEE
PUBLIC WORKS COMMITTEE AGENDA ITEM 9.1.**

DATE: August 26, 2021

DEPARTMENT: PW - Engineering

PROVIDED BY: Magdelene Wagner

SUBJECT:

Discussion and possible action regarding the Northview Road Sidewalk Extension.

BACKGROUND:

Northview Road currently has a sidewalk from the Waukesha Bypass project that installed a few years ago. The sidewalk currently terminates approximately 200' west of the intersection with Meadowbrook Road (US 318). The City budgeted to extend the sidewalk in Northview Road westerly to South Park, approximately 1,300 feet. As such, the engineering department designed and bid this sidewalk extension. Bids were due on August 10th. Unfortunately, we had no bids to open. When we reached out to the 4 potential bidders, they indicated it was a workload issue and they wouldn't be able to complete it this year in the designated timeframe.

Given this, we will re-budget this project for 2022 and re-bid the project later this year for 2022 construction.

FINANCIAL IMPACT:

Construction is estimated at \$150,000.

RECOMMENDED MOTION:

Public Works Committee recommend budgeting construction funds for 2022 for the Northview Sidewalk Extension.

**CITY OF PEWAUKEE
PUBLIC WORKS COMMITTEE AGENDA ITEM 9.2.**

DATE: August 26, 2021

DEPARTMENT: Public Works

PROVIDED BY: Magdelene Wagner

SUBJECT:

Discussion and possible action regarding We Energies LED Street Light Conversion for Municipalities.

BACKGROUND:

Earlier this year, I was contacted by We Energies regarding a municipal conversion of our street lighting. All but one of our existing street lights are the old high pressure sodium (HPS) lights. The trend for a long time has been to switch these to light-emitting diode (LED) in the industry. This trend has been very successful and the hold HPS fixtures are on their way to being obsolete and therefore becoming very expensive to maintain. We Energies has stated they can't guarantee availability of all HPS fixtures or components in the event of failure.

They have provided an opportunity to complete a conversion of all street lighting from the HPS to LED. The spreadsheet they provided show a payback within 10 years of the installation of the fixture. The spreadsheet shows the potential savings moving forward as well.

This is a substantial long term savings to the City and will reduce the electric consumption moving forward.

FINANCIAL IMPACT:

See attached spreadsheet.

In 2020, the City spent \$50,893.25 on street lighting. In 2021, we have spent \$28,543.01 through July so we are on track to spend about the same as 2020.

RECOMMENDED MOTION:

Public Works Committee recommend the City pursue the LED conversion and budget the appropriate upfront costs in the 2022 budget.

ATTACHMENTS:

Description

We Energies Correspondence

Wagner, Magdelene

From: Hatton, Andrea <Andrea.Hatton@wecenergygroup.com>
Sent: Tuesday, June 15, 2021 7:28 AM
To: Wagner, Magdelene
Subject: We Energies LED Street Light Conversion Program
Attachments: Muni Conversion - City of Pewaukee.pdf; ROL CONV INFO PEWAUKEE CITY OF 20210615.pdf; Standard WI 20210526.pdf

Dear Customer,

We Energies sent mailed information regarding LED conversion of your street lights approximately a year ago. We wanted to provide cost information for converting your fixtures based on your municipality's current billed street lighting. The LED fixtures in the scenario provided are what We Energies is considering the equivalent LED fixture to what is currently installed. The similarity is based on appearance and measured light emitted.

The Public Service Commission of Wisconsin established the LED conversion program that We Energies is required to follow. The program covers both standard (MS-3 WI) and non-standard (MS-4WI) rate street lighting. Standard rate lighting is installed on We Energies distribution poles and non-standard is lighting on non-distribution poles. The non-standard is typically decorative lighting or lighting installed on poles of materials other than wood. In the case of an LED conversion the rates have their own fees associated and differences in how they are applied.

Standard rate lighting conversion has an upfront installation cost which is dependent on the fixture selected by the municipality. Please see the attached standard LED fixture documentation. This document provides the installation cost and the monthly rate for each fixture available from We Energies. The cost of the LED fixture will be paid for through the municipality monthly bill for 84 months. This monthly amount as is indicated in the attached fixture documentation also includes the energy usage and facilities fee. At month 85, the monthly bill will reduce to just energy usage and facilities based on current rates at that time.

Non-standard lighting conversion also has an upfront cost associated; however, a portion of the fixture cost is included with the installation charge. The remainder of the cost of the LED fixture is rolled into the monthly bill for 84 months. This results in a larger upfront cost, but a lower monthly payment than the standard rate lighting. As with the standard rate lighting, the monthly amount reflected in the fixture information I have attached (for both the non-standard street lighting and post-top decorative lighting) the amount also include energy usage and facilities fees. The monthly bill reduce at month 85 to just energy use and facilities fees based on current rates at that time.

Please find attached spreadsheet for your municipality's current billed lights and a cost summary for a conversion based on We Energies recommended LED fixtures. We have provided the upfront cost associated for a full conversion of your street lights, along with the monthly savings based on our recommended fixtures, with an outlook to see where the upfront payback would take place.

Review the provided documentation and reach out with any questions or you would like to discuss in further detail.

Thank you,

Andrea Hatton
Lighting Specialist

WEC Energy Group – Customer Service Operations

Office: 414-221-4454

Andrea.hatton@wecenergygroup.com

Serving WEC Energy Group, We Energies, Wisconsin Public Service, Michigan Gas utilities, Minnesota Energy Resources, Peoples Gas, North Shore Gas, Upper Michigan Energy Resources and Bluewater Gas Storage



We Energies
231 W. Michigan St.
Milwaukee, WI 53203
www.we-energies.com

Friday, August 21, 2020

Department of Public Works
City of Pewaukee
W240 N3065 Pewaukee Rd
Pewaukee, WI 53072

Subject: Conversion to LED outdoor lighting

Dear Customer:

We have offered light-emitting diode (LED) streetlight fixtures for several years and have reached a point where virtually all new streetlight installations are LED. LED fixtures offer a whiter light and significant energy savings over high-pressure sodium (HPS) fixtures, which have been the industry standard for more than 30 years.

This trend has caused fixture manufacturers to shift 80 to 100 percent of their production to LED fixtures, canceling production of low-volume HPS fixtures and increasing costs for those that remain. While we anticipate the ability to replace HPS lightbulbs and common HPS fixtures for the near future, we can't guarantee availability of all HPS fixtures or components in the event of failure.

The typical LED conversion of a standard streetlight fixture mounted on a wood pole is \$150 to \$200, often providing payback in less than 10 years. Conversion cost for lights billed as nonstandard vary based on pole and fixture age and type.

I would like to discuss options for converting some or all of your streetlights to LED sources. This also is a good time to review lighting needs for areas that have experienced changes to traffic and pedestrian activity over the years.

Please contact me at 414-221-4454 to schedule a convenient time to discuss your lighting needs.

Sincerely,

Andrea Hatton
Lighting Consultant

CITY OF PEWAUKEE
WE ENERGIES STREET LIGHTS

Rate Code	POLE #	Pole Material	Wattage	LAMP	FIXTURE	Pole Location	Current Monthly	LED Conversion Fixture	LED Wattage	LED Upfront	Monthly < 84	Monthly > 84
MS-4 WI	01-L-00339	Fiberglass	150	HPS	Shoebox	[96-00552] ES OF CORPORATE CT 300' S OF RIDGEWAY	\$13.33	Rectangular Low	50	\$630.00	\$9.33	\$8.08
MS-3 WI	03-01340	Wood	150	HPS	Cobra-FCO	[75-2674] [98-15015] NE COR OF PEWAUKEE RD & W CAPITOL DR	\$15.69	Oval Low	48	\$150.00	\$12.73	\$7.46
MS-3 WI	03-01343	Wood	150	HPS	Cobra-FCO	[65-4388] [98-15016] SE COR OF PEWAUKEE RD & W CAPITOL DR	\$15.69	Oval Low	48	\$150.00	\$12.73	\$7.46
MS-3 WI	03-19535	Wood	150	HPS	Cobra-FCO	[80-04636] NW COR OF WESTMOUND DR & BLUEMOUND RD	\$15.69	Oval Low	48	\$150.00	\$12.73	\$7.46
MS-3 WI	03T10140	Wood	100	HPS	Cobra-FCO	[87T64284] SS OF PETERSON DR 1500' N OF LAUDERDALE DR	\$13.46	Oval Low	48	\$150.00	\$12.73	\$7.46
MS-3 WI	04-15668	Wood	150	HPS	Cobra-FCO	[77-09128] NS OF NORTHVIEW RD 800' W OF JILLS DR	\$15.69	Oval Low	48	\$150.00	\$12.73	\$7.46
MS-3 WI	05-02163	Wood	100	HPS	Cobra-SCO	[68-40011] [92-08345] SE COR OF LINDSAY RD & PEWAUKEE RD	\$13.46	Oval Low	48	\$150.00	\$12.73	\$7.46
MS-3 WI	05-16934	Wood	150	HPS	Cobra-FCO	[89-06971] NW COR OF EASTMOUND DR & BLUEMOUND RD	\$15.69	Oval Low	48	\$150.00	\$12.73	\$7.46
MS-3 WI	06-05272	Wood	150	HPS	Cobra-SCO	[80-00223] [91-03121] SE COR OF CTH M & CTH J	\$15.69	Oval Low	48	\$150.00	\$12.73	\$7.46
MS-3 WI	07-05815	Wood	200	HPS	Cobra-SCO	[57-3276] WS OF BLUEMOUND RD AT VALLEYVIEW LN	\$18.27	Oval Medium	97	\$175.00	\$15.61	\$9.70
MS-3 WI	08-19565	Wood	100	HPS	Cobra-FCO	[61-7405] SW COR OF LINDSAY RD & DUPLAINVILLE RD	\$13.46	Oval Low	48	\$150.00	\$12.73	\$7.46
MS-3 WI	13-12517	Wood	200	HPS	Cobra-FCO	[81T64093] [94-00798] SW COR OF GREEN RD & DUPLAINVILLE RD	\$18.27	Oval Medium	97	\$175.00	\$15.61	\$9.70
MS-3 WI	13-12522	Wood	100	HPS	Cobra-FCO	[62-5123] [95-14062] SW COR OF SPRINGDALE RD & GREEN RD	\$13.46	Oval Low	48	\$150.00	\$12.73	\$7.46
MS-3 WI	16-00522	Wood	100	HPS	Cobra-FCO	[88T33958] SS OF PETERSON DR 1000' N OF LAUDERDALE DR	\$13.46	Oval Low	48	\$150.00	\$12.73	\$7.46
MS-3 WI	16-03670	Wood	200	HPS	Cobra-FCO	[61-7424] SW COR OF OVERHILL LN & DUPLAINVILLE RD	\$18.27	Oval Medium	97	\$175.00	\$15.61	\$9.70
MS-3 WI	16-08370	Wood	150	HPS	Cobra-FCO	[68-8627] [98-04819] [05-04501] NE COR OF REDFORD BLVD & LINDSAY RD	\$15.69	Oval Low	48	\$150.00	\$12.73	\$7.46
MS-3 WI	17-00415	Wood	150	HPS	Cobra-FCO	[63-2022] NW COR OF PROSPECT AVE & OAK ST	\$15.69	Oval Low	48	\$150.00	\$12.73	\$7.46
MS-3 WI	17-01739	Wood	100	HPS	Cobra-FCO	[03-05535] NW COR OF PETERSON DR & LAUDERDALE DR	\$13.46	Oval Low	48	\$150.00	\$12.73	\$7.46
MS-3 WI	17-03576	Wood	100	HPS	Cobra-FCO	[75T40122] WS OF PETERSON DR 1000' N OF MIAMI DR	\$13.46	Oval Low	48	\$150.00	\$12.73	\$7.46
MS-3 WI	17-03665	Wood	100	HPS	Cobra-FCO	[77-02420] NW COR OF PETERSON DR & LAUDERDALE DR	\$13.46	Oval Low	48	\$150.00	\$12.73	\$7.46
MS-3 WI	17-04289	Wood	100	HPS	Cobra-FCO	[68-7131] NW COR OF ELM AVE & WOODLAND DR	\$13.46	Oval Low	48	\$150.00	\$12.73	\$7.46
MS-3 WI	17-05046	Wood	100	HPS	Cobra-FCO	SW COR OF OAK ST & PENINSULA DR [76-7361]	\$13.46	Oval Low	48	\$150.00	\$12.73	\$7.46
MS-3 WI	17-06028	Wood	150	HPS	Cobra-SCO	SW COR SPRINGDALE RD & GLENWOOD LA [76-9664/14-03782]	\$15.69	Oval Low	48	\$150.00	\$12.73	\$7.46
MS-3 WI	17-08016	Wood	100	HPS	Cobra-FCO	[31-1423] SS OF PROSPECT AVE AT ROCKY POINT RD	\$13.46	Oval Low	48	\$150.00	\$12.73	\$7.46
MS-3 WI	17-08099	Wood	100	HPS	Cobra-SCO	[02-15688] [56-4198] NE COR OF EDGEWOOD ST & PROSPECT AVE	\$13.46	Oval Low	48	\$150.00	\$12.73	\$7.46
MS-3 WI	17-08150	Wood	100	HPS	Cobra-FCO	[81-08943] NS OF WOODLAND DR 200' W OF FRONT ST	\$13.46	Oval Low	48	\$150.00	\$12.73	\$7.46

CITY OF PEWAUKEE
WE ENERGIES STREET LIGHTS

Rate Code	POLE #	Pole Material	Wattage	LAMP	FIXTURE	Pole Location	Current Monthly	LED Conversion Fixture	LED Wattage	LED Upfront	Monthly < 84	Monthly > 84
MS-3 WI	17-10606	Wood	150	HPS	Cobra-SCO	[00-01912] [88T33831] WS OF WOODLAND DR 466' S OF PETERSON DR	\$15.69	Oval Low	48	\$150.00	\$12.73	\$7.46
MS-3 WI	18-4122	Wood	150	HPS	Cobra-SCO	[51-4399] NW COR OF WOODLAND DR & ELM AVE	\$15.69	Oval Low	48	\$150.00	\$12.73	\$7.46
MS-3 WI	57-7137	Wood	250	HPS	Cobra-SCO	TOWN PARK S OF PROSPECT AVE E OF OAK ST	\$20.74	Oval Medium	97	\$175.00	\$15.61	\$9.70
MS-3 WI	58-1177	Wood	250	HPS	Cobra-SCO	TOWN PARK S OF PROSPECT AVE E OF OAK ST	\$20.74	Oval Medium	97	\$175.00	\$15.61	\$9.70
MS-3 WI	66-11079	Wood	200	HPS	Cobra-FCO	WS OF BLUEMOUND RD AT SUNNY RIDGE LN	\$18.27	Oval Medium	97	\$175.00	\$15.61	\$9.70
MS-3 WI	68-6862	Wood	150	HPS	Cobra-FCO	SE COR OF S MAPLEWAY-E & SUMMIT AVE	\$15.69	Oval Low	48	\$150.00	\$12.73	\$7.46
MS-3 WI	68-6904	Wood	100	HPS	Cobra-FCO	NW COR OF NOTTINGHAM DR & BUSSE RD	\$13.46	Oval Low	48	\$150.00	\$12.73	\$7.46
MS-3 WI	68T5411	Wood	100	HPS	Cobra-FCO	SE COR OF NORTHVIEW RD & JILLS DR	\$13.46	Oval Low	48	\$150.00	\$12.73	\$7.46
MS-3 WI	69-6551	Wood	100	HPS	Cobra-FCO	NS OF OF GLACIER RD & HILLSIDE GROVE	\$13.46	Oval Low	48	\$150.00	\$12.73	\$7.46
MS-3 WI	69-9637	Wood	150	HPS	Cobra-FCO	WS SPRINGDALE RD & GALAHAD LN	\$15.69	Oval Low	48	\$150.00	\$12.73	\$7.46
MS-3 WI	69T5352	Wood	100	HPS	Cobra-FCO	[TEMP3887] SE COR OF ISHUALA TRAIL & CAPITOL DR	\$13.46	Oval Low	48	\$150.00	\$12.73	\$7.46
MS-3 WI	70-3505	Wood	100	HPS	Cobra-FCO	BALMER PARK 500' S OF LINDSAY	\$13.46	Oval Low	48	\$150.00	\$12.73	\$7.46
MS-3 WI	70-3965	Wood	200	HPS	Cobra-FCO	NE COR OF NORTHVIEW RD & WOODSIDE DR	\$18.27	Oval Medium	97	\$175.00	\$15.61	\$9.70
MS-3 WI	75-2704	Wood	100	HPS	Cobra-SCO	SE COR OF TAKOMA DR & BLUEMOUND RD	\$13.46	Oval Low	48	\$150.00	\$12.73	\$7.46
MS-3 WI	77-02451	Wood	100	HPS	Cobra-FCO	WS OF KOPMEIER DR 2400' W OF ISLE CT	\$13.46	Oval Low	48	\$150.00	\$12.73	\$7.46
MS-3 WI	80-08807	Wood	150	HPS	Cobra-SCO	SW COR OF SPRINGDALE RD & GLENWOOD LN	\$15.69	Oval Low	48	\$150.00	\$12.73	\$7.46
MS-3 WI	80-08808	Wood	150	HPS	Cobra-SCO	SW COR OF BURNINGWOOD LN & SPRINGDALE RD	\$15.69	Oval Low	48	\$150.00	\$12.73	\$7.46
MS-3 WI	80-11932	Wood	100	HPS	Cobra-FCO	SS OF PARKSIDE LN 500' W OF ARMOUR LN	\$13.46	Oval Low	48	\$150.00	\$12.73	\$7.46
MS-3 WI	81-08945	Wood	100	HPS	Cobra-FCO	NE COR OF WOODLAND DR & OAK ST	\$13.46	Oval Low	48	\$150.00	\$12.73	\$7.46
MS-3 WI	87-11367	Wood	100	HPS	Cobra-FCO	NE COR OF REDFORD BLVD & DUPLAINVILLE RD	\$13.46	Oval Low	48	\$150.00	\$12.73	\$7.46
MS-3 WI	88-06878	Wood	250	HPS	Cobra-SCO	TOWN PARK S OF PROSPECT AVE E OF OAK ST	\$20.74	Oval Medium	97	\$175.00	\$15.61	\$9.70
MS-3 WI	89-06960	Wood	100	HPS	Cobra-FCO	SE COR OF BADINGER RD & BLUEMOUND RD	\$13.46	Oval Low	48	\$150.00	\$12.73	\$7.46
MS-3 WI	89-06965	Wood	100	HPS	Cobra-FCO	SE COR OF WOLF RD & BLUEMOUND RD	\$13.46	Oval Low	48	\$150.00	\$12.73	\$7.46
MS-3 WI	89-12969	Wood	100	HPS	Cobra-FCO	[29-4465] SE COR OF GLACIER RD & PARKSIDE RD	\$13.46	Oval Low	48	\$150.00	\$12.73	\$7.46
MS-3 WI	94-01318	Wood	100	HPS	Cobra-FCO	NW COR OF LINDSAY RD & SWAN RD	\$13.46	Oval Low	48	\$150.00	\$12.73	\$7.46
MS-3 WI	94-13636	Wood	100	HPS	Cobra-FCO	[68-7134] ES OF LAKEVIEW BLVD 150' N OF WOODLAND DR	\$13.46	Oval Low	48	\$150.00	\$12.73	\$7.46
MS-3 WI	94-13637	Wood	150	HPS	Cobra-FCO	[55-4630] SS OF WOODLAND DR & LAKEVIEW BLVD	\$15.69	Oval Low	48	\$150.00	\$12.73	\$7.46
MS-3 WI	95-09649	Wood	150	HPS	Cobra-FCO	[69-2561] BALMER PARK 150' S OF LINDSAY RD	\$15.69	Oval Low	48	\$150.00	\$12.73	\$7.46
MS-4 WI	96-00551	Fiberglass	150	HPS	Shoebox	ES OF CORPORATE CT 75' S OF RIDGEWAY	\$13.33	Rectangular Low	50	\$630.00	\$9.33	\$8.08
MS-4 WI	96-00553	Fiberglass	150	HPS	Shoebox	ES OF CORPORATE CT 550' S OF RIDGEWAY	\$13.33	Rectangular Low	50	\$630.00	\$9.33	\$8.08
MS-4 WI	96-00554	Fiberglass	150	HPS	Shoebox	ES OF CORPORATE CT 800' S OF RIDGEWAY	\$13.33	Rectangular Low	50	\$630.00	\$9.33	\$8.08
MS-4 WI	96-02613	Fiberglass	150	HPS	Shoebox	MEDIAN OF RIDGEVIEW PKWY 350' E OF STONERIDGE DR	\$13.33	Rectangular Low	50	\$630.00	\$9.33	\$8.08
MS-4 WI	96-02613	Fiberglass	150	HPS	Shoebox	MEDIAN OF RIDGEVIEW PKWY 350' E OF STONERIDGE DR	\$13.33	Rectangular Low	50	\$630.00	\$9.33	\$8.08
MS-4 WI	96-02614	Fiberglass	150	HPS	Shoebox	MEDIAN OF RIDGEVIEW PKWY 175' E OF STONERIDGE DR	\$13.33	Rectangular Low	50	\$630.00	\$9.33	\$8.08
MS-4 WI	96-02614	Fiberglass	150	HPS	Shoebox	MEDIAN OF RIDGEVIEW PKWY 175' E OF STONERIDGE DR	\$13.33	Rectangular Low	50	\$630.00	\$9.33	\$8.08

CITY OF PEWAUKEE
WE ENERGIES STREET LIGHTS

Rate Code	POLE #	Pole Material	Wattage	LAMP	FIXTURE	Pole Location	Current Monthly	LED Conversion Fixture	LED Wattage	LED Upfront	Monthly < 84	Monthly > 84
MS-4 WI	96-02615	Fiberglass	150	HPS	Shoebox	MEDIAN OF RIDGEVIEW PKWY AT STONERIDGE DR	\$13.33	Rectangular Low	50	\$630.00	\$9.33	\$8.08
MS-4 WI	96-02615	Fiberglass	150	HPS	Shoebox	MEDIAN OF RIDGEVIEW PKWY AT STONERIDGE DR	\$13.33	Rectangular Low	50	\$630.00	\$9.33	\$8.08
MS-4 WI	96-L-02672	Fiberglass	150	HPS	Shoebox	MEDIAN OF RIDGEVIEW PARKWAY 100' E OF PEWAUKEE RD	\$13.33	Rectangular Low	50	\$630.00	\$9.33	\$8.08
MS-4 WI	96-L-02672	Fiberglass	150	HPS	Shoebox	MEDIAN OF RIDGEVIEW PARKWAY 100' E OF PEWAUKEE RD	\$13.33	Rectangular Low	50	\$630.00	\$9.33	\$8.08
MS-4 WI	96-L-02673	Fiberglass	150	HPS	Shoebox	MEDIAN OF RIDGEVIEW PARKWAY 230' E OF PEWAUKEE RD	\$13.33	Rectangular Low	50	\$630.00	\$9.33	\$8.08
MS-4 WI	96-L-02673	Fiberglass	150	HPS	Shoebox	MEDIAN OF RIDGEVIEW PARKWAY 230' E OF PEWAUKEE RD	\$13.33	Rectangular Low	50	\$630.00	\$9.33	\$8.08
MS-4 WI	96-L-02674	Fiberglass	150	HPS	Shoebox	MEDIAN OF RIDGEVIEW PARKWAY 360' E OF PEWAUKEE RD	\$13.33	Rectangular Low	50	\$630.00	\$9.33	\$8.08
MS-4 WI	96-L-02674	Fiberglass	150	HPS	Shoebox	MEDIAN OF RIDGEVIEW PARKWAY 360' E OF PEWAUKEE RD	\$13.33	Rectangular Low	50	\$630.00	\$9.33	\$8.08
MS-3 WI	98-05936	Wood	150	HPS	Cobra-FCO	[70-3506] BALMER PARK 350' S OF LINDSAY RD	\$15.69	Oval Low	48	\$150.00	\$12.73	\$7.46
							\$1,026.15		3784	\$18,380.00	\$859.74	\$550.04

Wattage Savings
5866 kW
67.459 kWh

Fixture Count 70

	Existing	Proposed	Savings	Upfront Cost	Carbon Offset
Monthly	\$1,026.15	\$859.74	\$166.41	\$18,380.00	74.20
7 Years	\$86,196.60	\$72,218.16	\$13,978.44		lb CO2/kWh
10 Years	\$123,138.00	\$92,019.60	\$31,118.40		
15 Years	\$184,707.00	\$125,022.00	\$59,685.00		
20 Years	\$246,276.00	\$158,024.40	\$88,251.60		

**CITY OF PEWAUKEE
PUBLIC WORKS COMMITTEE AGENDA ITEM 9.3.**

DATE: August 26, 2021

DEPARTMENT: Public Works

PROVIDED BY: Magdelene Wagner

SUBJECT:

Discussion and possible action regarding supporting a City-wide Tree Inventory.

BACKGROUND:

The City was contacted by Wachtel Tree Science in July asking if the City was interested in completing a City-wide Tree Inventory. The City recently consulted with Wachtel on a few individual trees (one that was damaged by recent construction and an area that will be part of a water main extension). Around this time, the Wisconsin Department of Natural Resources announced the Urban Forestry Grant Applications were being accepted. Our contact at Wachtel is looking to determine if we are interested in an inventory. This would qualify the Urban Forestry Grant. The grant applications are due by October 1st. Before Staff spends any time working on this grant application or getting a rough number of cost of this effort, we wanted to determine if the governing bodies are interested in this effort.

We have done two inventories of trees. The first was Green Road in 2011 which supported the reconstruction project. The second was Lindsay Road corridor in 2013-ish which was completed in anticipation of a road reconstruction which was subsequently delayed. Both have not been updated since they were completed. I believe the Parks Department may have done some inventory of some of their parks as well.

The WDNR and SEWRPC are also becoming very interested in this type of program to determine impacts to the tree canopy due to the Emerald Ash Borer. There have been studies in the past and ongoing to determine how these impact air quality and water quality.

FINANCIAL IMPACT:

RECOMMENDED MOTION:

ATTACHMENTS:

Description
Wachtel email

Wagner, Magdelene

From: Nathan Schuettepelz - Wachtel Tree Science <NateS@wachteltree.com>
Sent: Wednesday, July 14, 2021 12:55 PM
To: Wagner, Magdelene
Subject: City Forestry Consulting Services-2022

Good afternoon Maggie,

I wanted to circle around to the discussion of future forestry consulting with the City. As you may know, the 2022 WIDNR Urban Forest grant application period is now open. We've done on and off forestry consulting with the City usually centered around development projects. I do not believe the City has a fully completed public tree inventory. This type of work qualifies within projects that are selected for the 50/50 cost share Urban forest grants.

If you'd like to chat further about this opportunity, I'd be happy to discuss. We could be available to draft a potential project budget, as well as assist in the grant application prep. Let me know how you would like to proceed!

Nate

Nathan Schuettepelz, RCA # 732
Consulting Department Manager
ISA Certified Arborist Municipal Specialist WI-0887AM, TRAQ

Wachtel Tree Science
Office: 262-538-1900
Mobile: 262-337-3984
Fax: 262-538-1412
nates@wachteltree.com

**CITY OF PEWAUKEE
PUBLIC WORKS COMMITTEE AGENDA ITEM 10.1.**

DATE: August 26, 2021

DEPARTMENT: Public Works

PROVIDED BY: Magdelene Wagner

SUBJECT:

Discussion on the new Department of Public Works Highway Garage.

BACKGROUND:

The new Public Works Highway Garage is currently out for bids. The bids are due September 9, 2021. The bids will be awarded on September 13, 2021. Construction is anticipated to occur throughout winter, spring, and summer with occupancy by September 30, 2022.

If you are interested in viewing the plans, please feel free to stop in City Hall.

FINANCIAL IMPACT:

RECOMMENDED MOTION:

CITY OF PEWAUKEE
PUBLIC WORKS COMMITTEE AGENDA ITEM 10.2.

DATE: August 26, 2021

DEPARTMENT: Public Works

PROVIDED BY: Magdelene Wagner

SUBJECT:

Discussion and possible action to partner with Waukesha County Sheriff Department in purchasing electronic speed signs.

BACKGROUND:

Our Sheriff department is looking to purchase additional electronic speed signs which indicate the speed traffic is currently traveling on a roadway. These provide a real time notification of the speed a driver is traveling on the roadway and is typically accompanied by a speed limit sign.

We have several residential neighborhoods which complain that traffic speeds through their area and have requested these signs be posted to notify the drivers of how fast they are traveling. We would anticipate these signs be moved periodically throughout the year to different areas based on complaints from residents or areas of concerns identified by the Sheriff or DPW staff.

As a side benefit, most of these devices can provide a traffic count for an area.

FINANCIAL IMPACT:

The units cost \$800 to \$1500 depending on the functionality desired.

RECOMMENDED MOTION:

Public Works Committee recommend including funds in the 2022 budget to partner with the Sheriff's Department in acquiring several electronic speed signs.